

M E S C A

S O M A B A Y

Mother nature was unbelievably generous with a sun-kissed peninsula floating on the Red Sea's gleaming coastline.

Here is where exquisite ribbons of sand are backed by lush green golf views and lapped by turquoise waters sleeping at the foot of red mountain peaks. Captivating beneath the water

as above, Somabay is one of the few places on earth that does beach-front luxury so effortlessly.

A paradise getaway.



An idyllic peninsula under the Red Sea's year-round sun.

04

Nestled on 10 million square meters of lush land, life at Somabay is where fantasy-scapes follow you wherever you go and sundrenched activities take infinite elevating forms. Expertly conceived to evoke a laid-back European feel, every aspect of the

heavenly development is sympathetic to nature, painting colorful experiences around its lively marina and soul-soothing jetty, so you can take recharge or decelerate. Home to 5 luxury resort hotels and a signature portfolio of residential properties, Somabay's

one-of-a-kind settings with its full complement of premium amenities are the stage for incomparable experiences alongside friends and family.



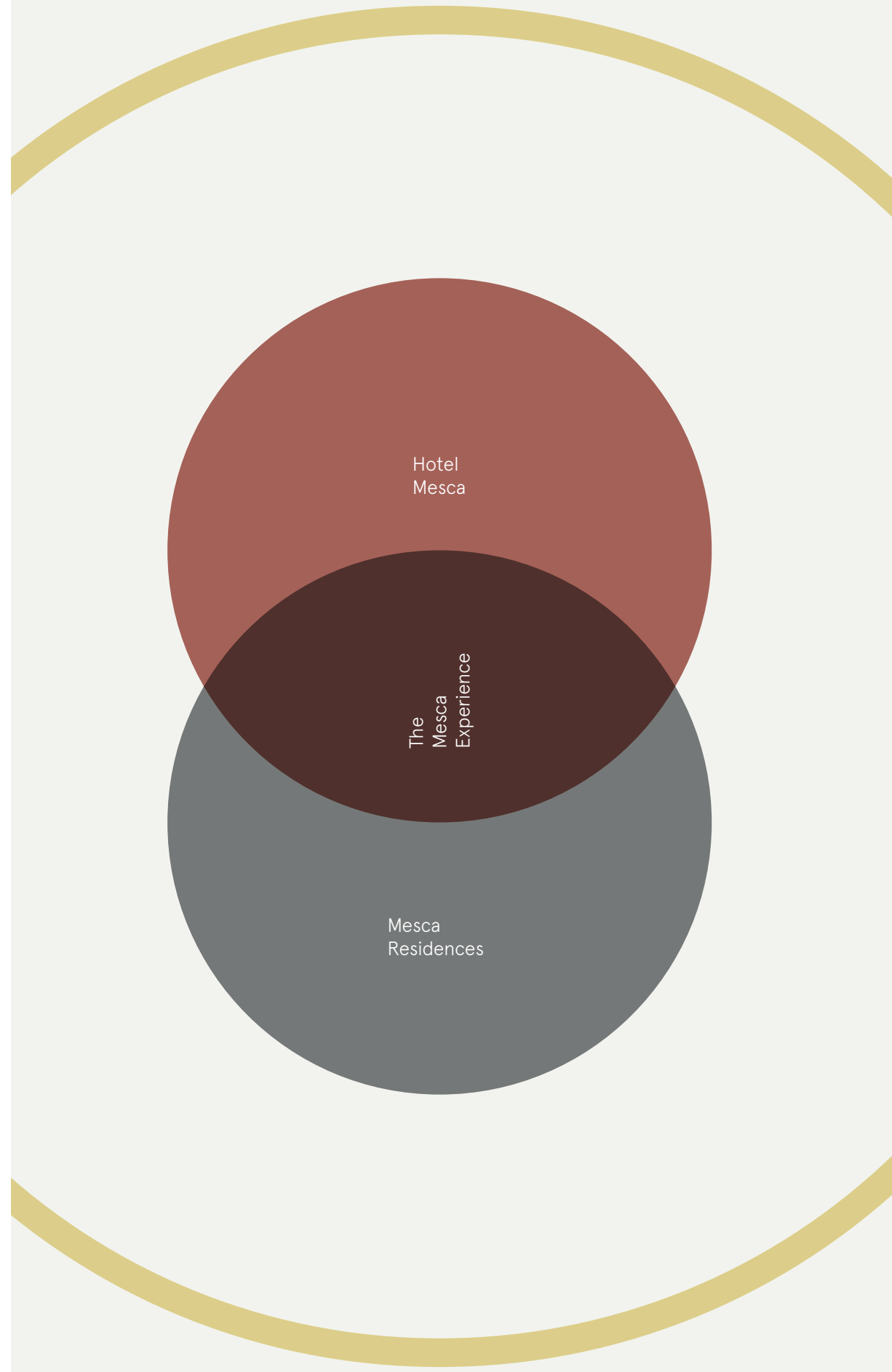
THE MESCA EXPE- RIENCE

A fusion-living concept.

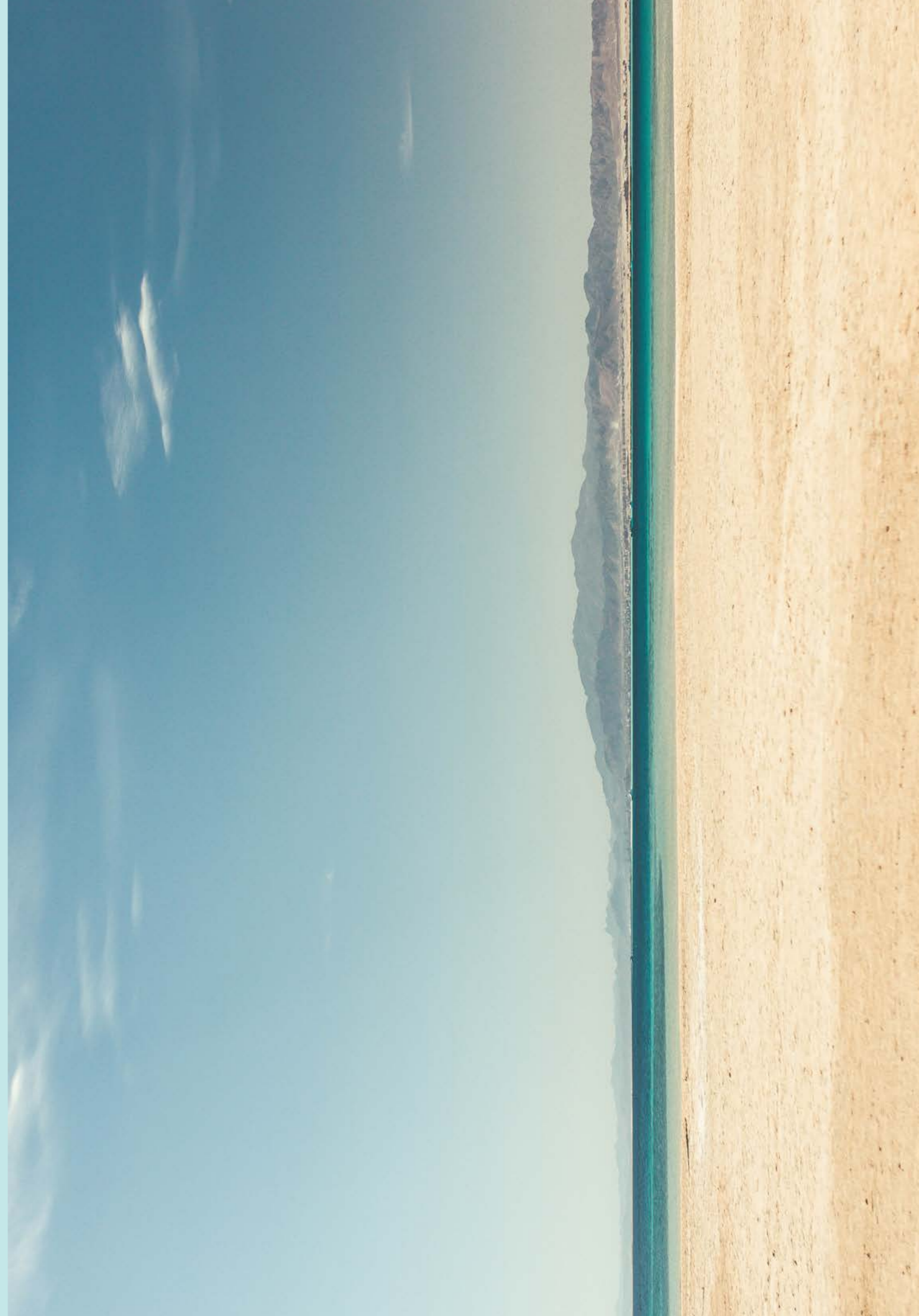
Gently rising from a sheet of turquoise, at Mesca it's hard to tell where the sea ends and sky begins. Your life here lies at the intersection of two worlds to strike the perfect balance between home-style living with all its freedom and privacy and luxury hotel hospitality with its abundant variety of signature amenities delivered straight to your door. Sit back, relax and allow Mesca's unmatched synergy to introduce a one-of-a-kind beachfront experience, breathing harmony and excitement into every aspect of your life.



The Mesca Component.



Step into
Mesca Residences;
Somabay's exclusive
beachfront enclave,
directly opening onto
its tranquil azure
bay and captivating
mountain terrain.





1. Hotel Mesca
2. Mesca Residences
3. Mesca Beach
4. Serviced Cabanas

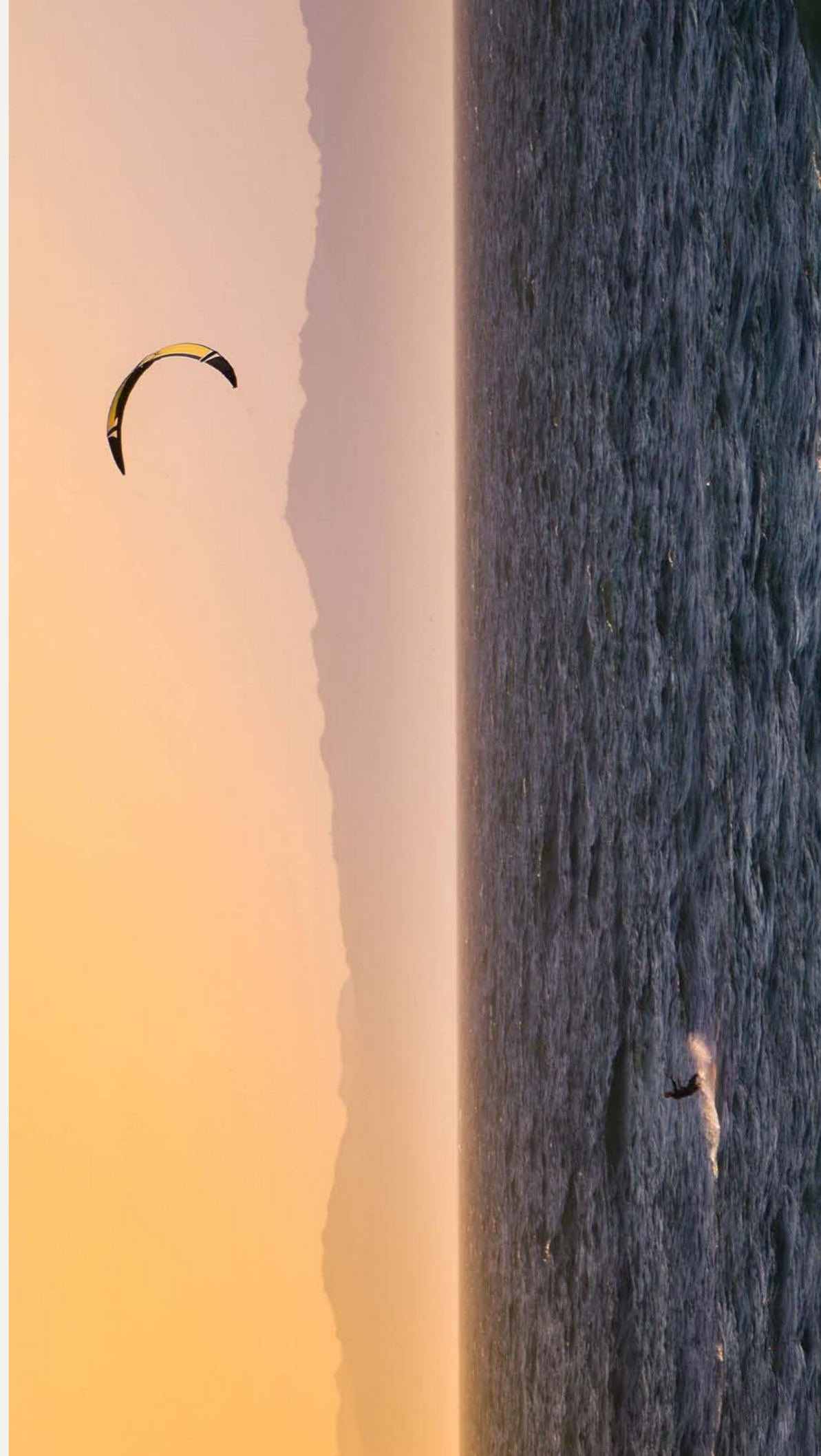
DISCLAIMER 1. Drawings are not to scale. 2. The architectural details, dimensions and area in this plan are based on Schematic Design information only, and final As-Built conditions may vary. 3. All units are sold as unfurnished apartments, without furniture and furnishings, without white goods provisions, etc. 4. All images used are for illustrative purposes only and do not represent the actual size, features, specifications, fittings, and furnishings. 5. Somabay reserves the right to make revisions/alterations, at its absolute discretion, and without liability.

An exclusive slice of island paradise.

Embraced by paradise surroundings in every direction, life at Mesca Residences brings to fruition a unique vision of beachfront simplicity and contemporary luxury crafted around diverse lifestyles. Masterplanned on varied elevations to offer unobscured views for all

homeowners alike, the sun-drenched development breaks down the optimum in beauty to invite the Red Sea's serenity, its panoramic sunsets and fresh breeze straight into every home.

Exclusive beachfront enclave.



Stand Alone Villa.

Extravagant space and exquisite touches of luxury create the perfect ambience of a private one storey Stand Alone Villa, with three en suite bedrooms, lavish living and dining areas, and a private swimming pool surrounded by an elaborate terrace for relaxing and entertaining. Step from your luxury villa straight

onto the sunny deck of your private pool and either dive in for a morning swim, or cool off from the afternoon sun at your own private garden. Boasting large glass window facades and sharp contemporary lines, Mesca's Stand Alone Villa is carefully designed to invite ample light, as well as the outdoors in, so you can

forge an unobscured connection with nature from the comfort of your own home. Combining raw stone punctuations and streamlined wooden beams, Mesca's Stand Alone Villa is a signature statement of contemporary elegance by the sea.



DISCLAIMER: Drawings are made to scale. The architectural details, fixtures and areas in this plan are based on Schematic Design. All dimensions and materials shall be subject to change without notice. All images are for illustrative purposes only and do not represent the actual size, features, specifications, fittings, and furnishings. Somabay reserves the right to make revisions/alterations, at its absolute discretion, and without liability.

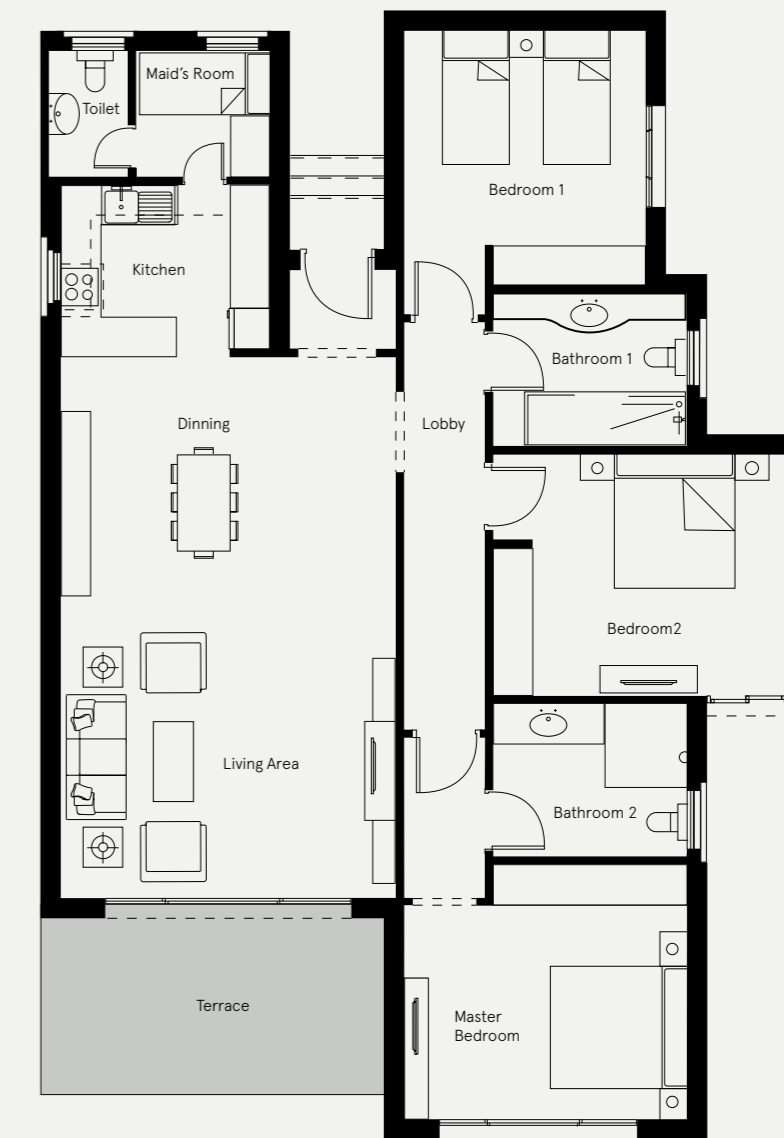


DISCLAIMER 1. Drawings are not to scale. 2. The architectural details, dimensions and area in this plan are based on Schematic Design information only, and final As-Built conditions may vary. 3. All units are sold as unfurnished apartments, without furniture and furnishings, without white goods provisions, etc. 4. All images used are for illustrative purposes only and do not represent the actual size, features, specifications, fittings, and furnishings. 5. Somabay reserves the right to make revisions/alterations, at its absolute discretion, and without liability.

Stand Alone Villa Floorplan.



Stand Alone Villa



Unit Area
165.00 m²

Terrace
16.50 m²

Gross Area
181.60 m²

Living Area
5.00 × 3.90

Kitchen
3.62 × 2.80

Dinning
5.50 × 3.70

Bedroom 1
4.10 × 3.80

Bathroom 1
3.35 × 2.20

Bedroom 2
4.90 × 3.60

Bathroom 2
3.35 × 2.20

Master Bedroom
4.70 × 3.80

Maid's room
2.25 × 1.85

Toilet
1.85 × 1.45

DISCLAIMER 1. Drawings are not to scale. 2. The architectural details, dimensions and area in this plan are based on Schematic Design information only, and final As-Built conditions may vary. 3. All units are sold as unfurnished apartments, without furniture and furnishings, without white goods provisions, etc. 4. All images used are for illustrative purposes only and do not represent the actual size, features, specifications, fittings, and furnishings. 5. Somabay reserves the right to make revisions/alterations, at its absolute discretion, and without liability.

DISCLAIMER 1. Drawings are not to scale. 2. The architectural details, dimensions and area in this plan are based on Schematic Design information only, and final As-Built conditions may vary. 3. All units are sold as unfurnished apartments, without furniture and furnishings, without white goods provisions, etc. 4. All images used are for illustrative purposes only and do not represent the actual size, features, specifications, fittings, and furnishings. 5. Somabay reserves the right to make revisions/alterations, at its absolute discretion, and without liability.

Twin Villa.

Grand and majestic, Mesca's Twin Villa offers stunning views of dazzling sunsets, inviting you to watch as Mother Nature works her magic, and breathe in the serenity of the moment into your home. Seamlessly nestled into magical surroundings, your spacious Twin Villa at Mesca is surrounded by fragrant

flora, and a manicured private garden opening onto spectacular sea views to invite the best of nature into your home. Crisp and contemporary, your Twin Villa infuses true luxury with highly specified comfort, capturing a unique earthly palette that perfectly resounds with nature's surrounding gifts and generous

sunshine. Enjoy a good read on your tranquil patio or sip on a refreshing cocktail in the comfort of your own swimming pool to enjoy an enriching experience that is the essence of everyday life here.



DISCLAIMER 1. Drawings are not to scale. 2. The architectural details, dimensions and area in this plan are based on Schematic Design information only, and final As-Built conditions may vary. 3. All units are sold as unfurnished apartments, without furniture and furnishings, without white goods provisions, etc. 4. All images used are for illustrative purposes only and do not represent the actual size, features, specifications, fittings, and furnishings. 5. Somabay reserves the right to make revisions/alterations, at its absolute discretion, and without liability.

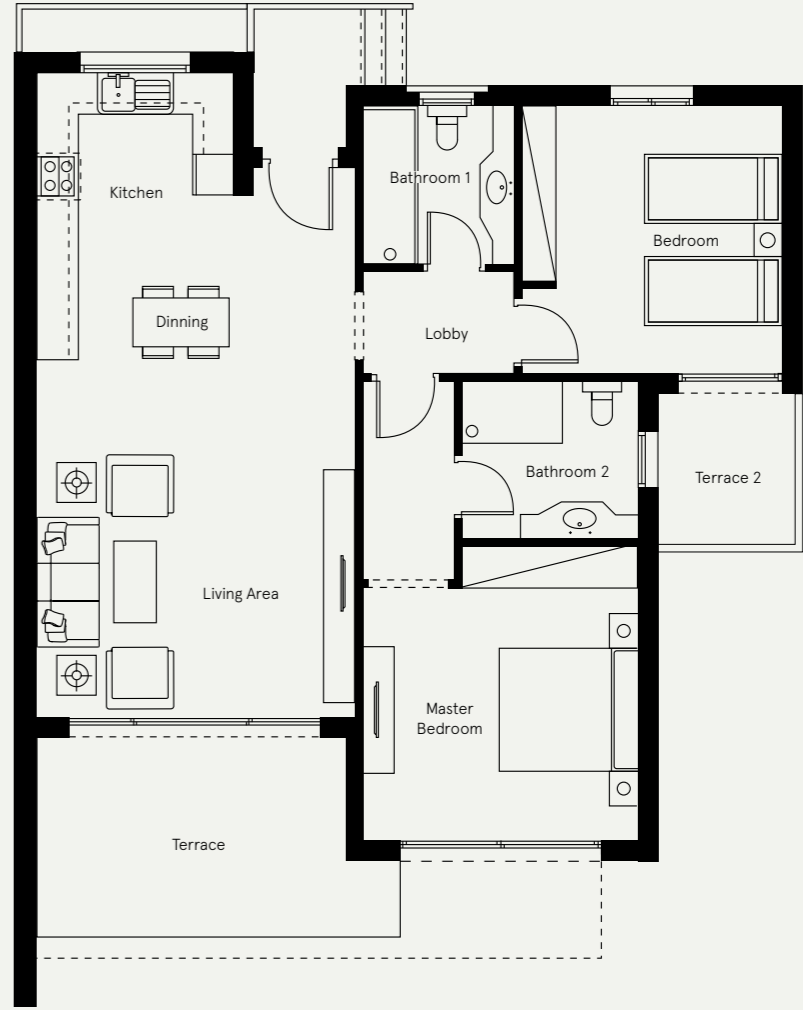


DISCLAIMER 1. Drawings are not to scale. 2. The architectural details, dimensions and area in this plan are based on Schematic Design information only, and final As-Built conditions may vary. 3. All units are sold as unfurnished apartments, without furniture and furnishings, without white goods provisions, etc. 4. All images used are for illustrative purposes only and do not represent the actual size, features, specifications, fittings, and furnishings. 5. Somabay reserves the right to make revisions/alterations, at its absolute discretion, and without liability.

Twin Villa Floorplan.



Twin Villa



Unit Area
112.80 m²

Terrace
18.74 m²

Gross Area
133.24m²

Living Area
4.60 × 3.90

Kitchen
1.80 × 2.80

Dinning
4.60 × 3.60

Bedroom
3.90 × 3.70

Bathroom 1
2.20 × 2.00

Master Bedroom
4.00 × 4.20

Bathroom 2
2.20 × 2.50

DISCLAIMER 1.Drawings are not to scale. 2.The architectural details, dimensions and area in this plan are based on Schematic Design information only, and final As-Built conditions may vary. 3.All units are sold as unfurnished apartments, without furniture and furnishings, without white goods provisions, etc. 4.All images used are for illustrative purposes only and do not represent the actual size, features, specifications, fittings, and furnishings. 5.Somabay reserves the right to make revisions/alterations, at its absolute discretion, and without liability.

DISCLAIMER 1.Drawings are not to scale. 2.The architectural details, dimensions and area in this plan are based on Schematic Design information only, and final As-Built conditions may vary. 3.All units are sold as unfurnished apartments, without furniture and furnishings, without white goods provisions, etc. 4.All images used are for illustrative purposes only and do not represent the actual size, features, specifications, fittings, and furnishings. 5.Somabay reserves the right to make revisions/alterations, at its absolute discretion, and without liability.

Corner Lofts.

Sleek and spectacular, with extraordinary privacy and exceptional views, Mesca's Corner Lofts take waterfront luxury living to new heights. Designed on varied elevations to open onto tranquil lagoon and sea views, Mesca's Corner

Lofts are a fluid way to experience daily changing vistas, soothing waters and the development's paradise surroundings captured from the comfort of your room. Boasting sleek contemporary lines and an island-style ambience, the

sea-gazing Lofts allow you to revel in ultimate seclusion while taking in panoramic views from your sprawling sunny home.



DISCLAIMER 1. Drawings are not to scale. 2. The architectural details, dimensions and area in this plan are based on Schematic Design information only, and final As-Built conditions may vary. 3. All units are sold as unfurnished apartments, without furniture and furnishings, without white goods provisions, etc. 4. All images used are for illustrative purposes only and do not represent the actual size, features, specifications, fittings, and furnishings. 5. Somabay reserves the right to make revisions/alterations, at its absolute discretion, and without liability.



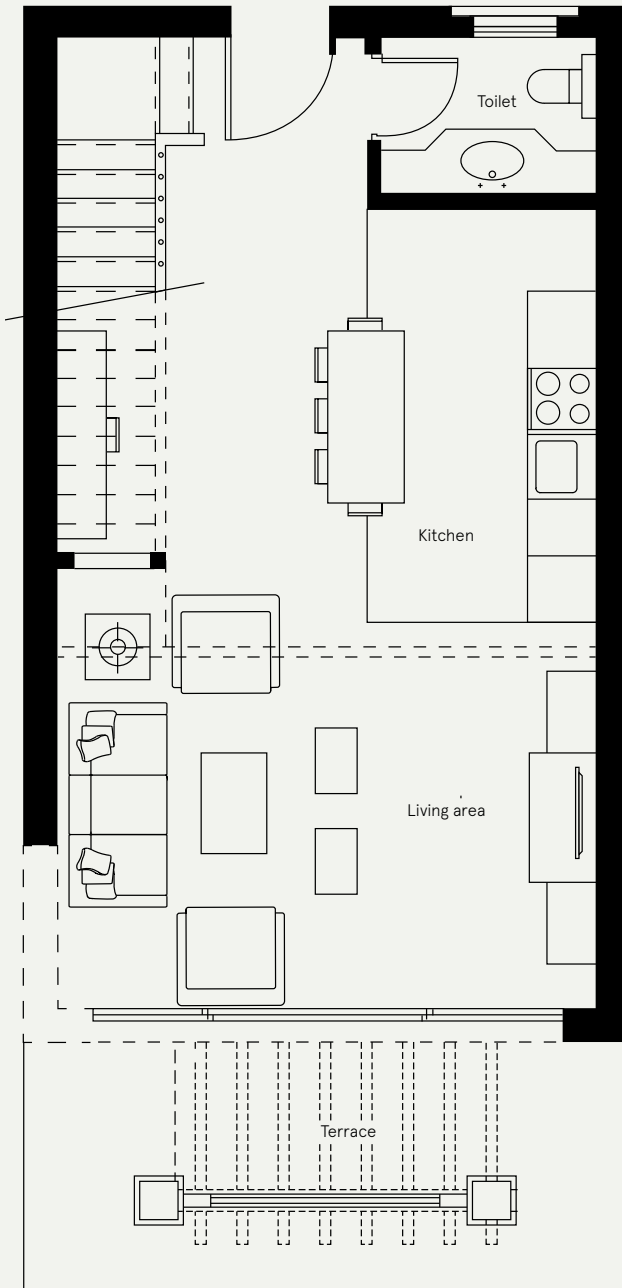
DISCLAIMER 1. Drawings are not to scale. 2. The architectural details, dimensions and area in this plan are based on Schematic Design information only, and final As-Built conditions may vary. 3. All units are sold as unfurnished apartments, without furniture and furnishings, without white goods provisions, etc. 4. All images used are for illustrative purposes only and do not represent the actual size, features, specifications, fittings, and furnishings. 5. Somabay reserves the right to make revisions/alterations, at its absolute discretion, and without liability.



DISCLAIMER 1.Drawings are not to scale. 2.The architectural details, dimensions and area in this plan are based on Schematic Design information only, and final As-Built conditions may vary. 3.All units are sold as unfurnished apartments, without furniture and furnishings, without white goods provisions, etc. 4.All images used are for illustrative purposes only and do not represent the actual size, features, specifications, fittings, and furnishings. 5.Somabay reserves the right to make revisions/alterations, at its absolute discretion, and without liability.

Corner Lofts

1 Bedroom



Ground Floor

Unit Area
86.44 m²

Terrace
15.67 m²

Gross Area
102.10 m²

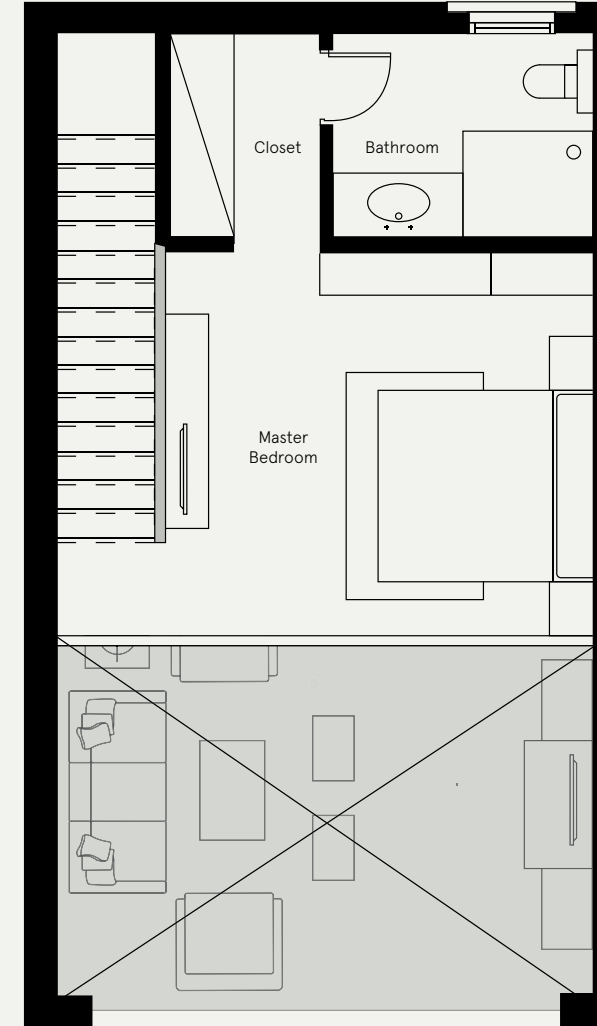
Living Area
3.80 × 5.00

Kitchen
2.15 × 3.80

Toilet
2.00 × 1.40

Corner Lofts

1 Bedroom



First Floor

Master Bedroom
3.60 × 4.00

Bathroom
1.60 × 2.40

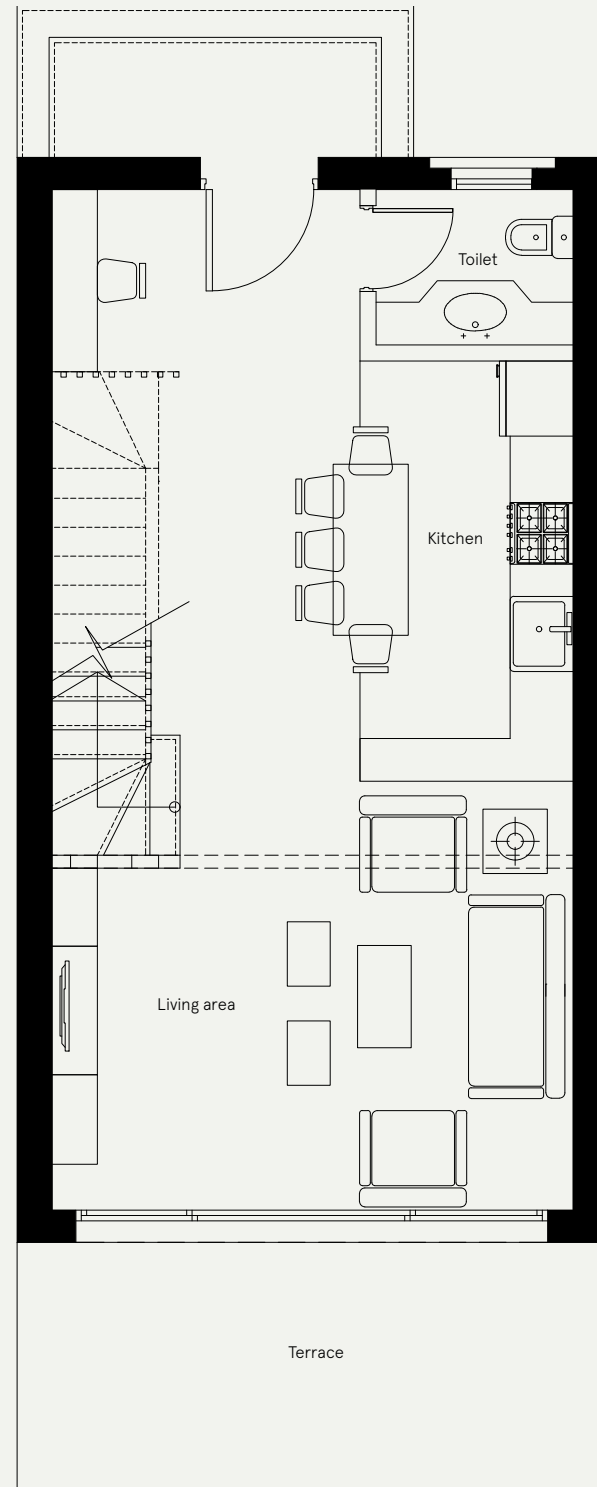
Closet
1.40 × 1.90

DISCLAIMER 1. Drawings are not to scale. 2. The architectural details, dimensions and area in this plan are based on Schematic Design information only, and final As-Built conditions may vary. 3. All units are sold as unfurnished apartments, without furniture and furnishings, without white goods provisions, etc. 4. All images used are for illustrative purposes only and do not represent the actual size, features, specifications, fittings, and furnishings. 5. Somabay reserves the right to make revisions/alterations, at its absolute discretion, and without liability.

DISCLAIMER 1. Drawings are not to scale. 2. The architectural details, dimensions and area in this plan are based on Schematic Design information only, and final As-Built conditions may vary. 3. All units are sold as unfurnished apartments, without furniture and furnishings, without white goods provisions, etc. 4. All images used are for illustrative purposes only and do not represent the actual size, features, specifications, fittings, and furnishings. 5. Somabay reserves the right to make revisions/alterations, at its absolute discretion, and without liability.

Corner Lofts

2 Bedrooms



Ground Floor

Unit Area
97.50 m²

Terrace
13.00 m²

Gross Area
110.50 m

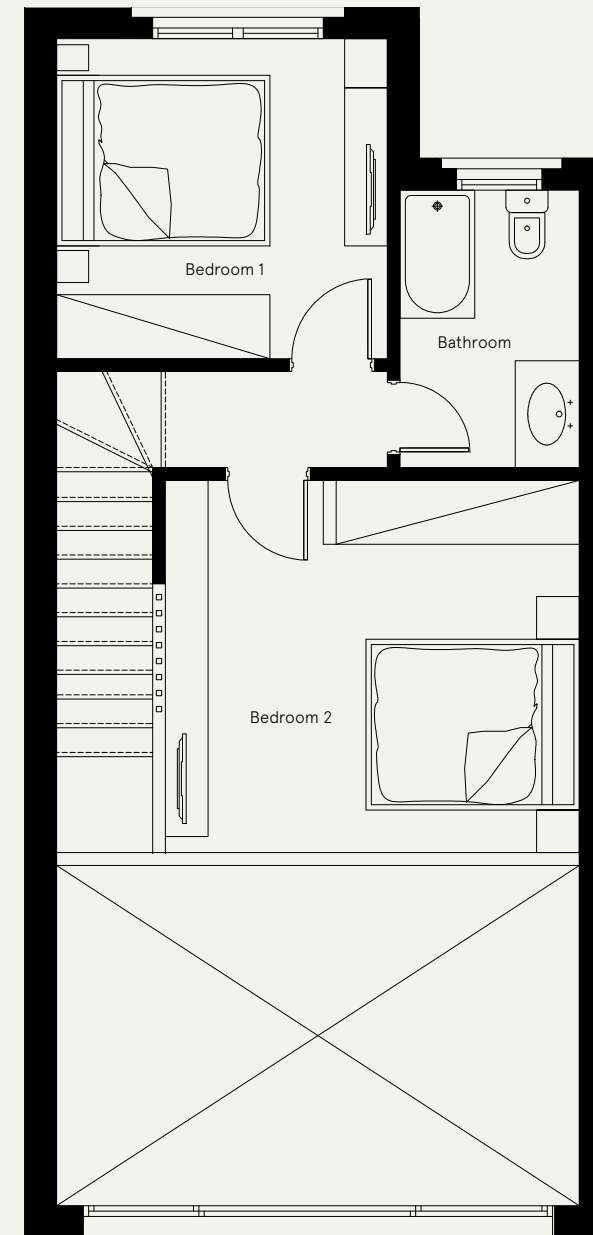
Living Area
4.90 × 4.00

Kitchen
2.00 × 3.90

Toilet
1.45 × 1.85

Corner Lofts

2 Bedrooms



First Floor

Bedroom1
3.10 × 3.00

Bathroom
1.70 × 2.60

Bedroom
23.50 × 3.90

DISCLAIMER 1. Drawings are not to scale. 2. The architectural details, dimensions and area in this plan are based on Schematic Design information only, and final As-Built conditions may vary. 3. All units are sold as unfurnished apartments, without furniture and furnishings, without white goods provisions, etc. 4. All images used are for illustrative purposes only and do not represent the actual size, features, specifications, fittings, and furnishings. 5. Somabay reserves the right to make revisions/alterations, at its absolute discretion, and without liability.

DISCLAIMER 1. Drawings are not to scale. 2. The architectural details, dimensions and area in this plan are based on Schematic Design information only, and final As-Built conditions may vary. 3. All units are sold as unfurnished apartments, without furniture and furnishings, without white goods provisions, etc. 4. All images used are for illustrative purposes only and do not represent the actual size, features, specifications, fittings, and furnishings. 5. Somabay reserves the right to make revisions/alterations, at its absolute discretion, and without liability.

MESCA

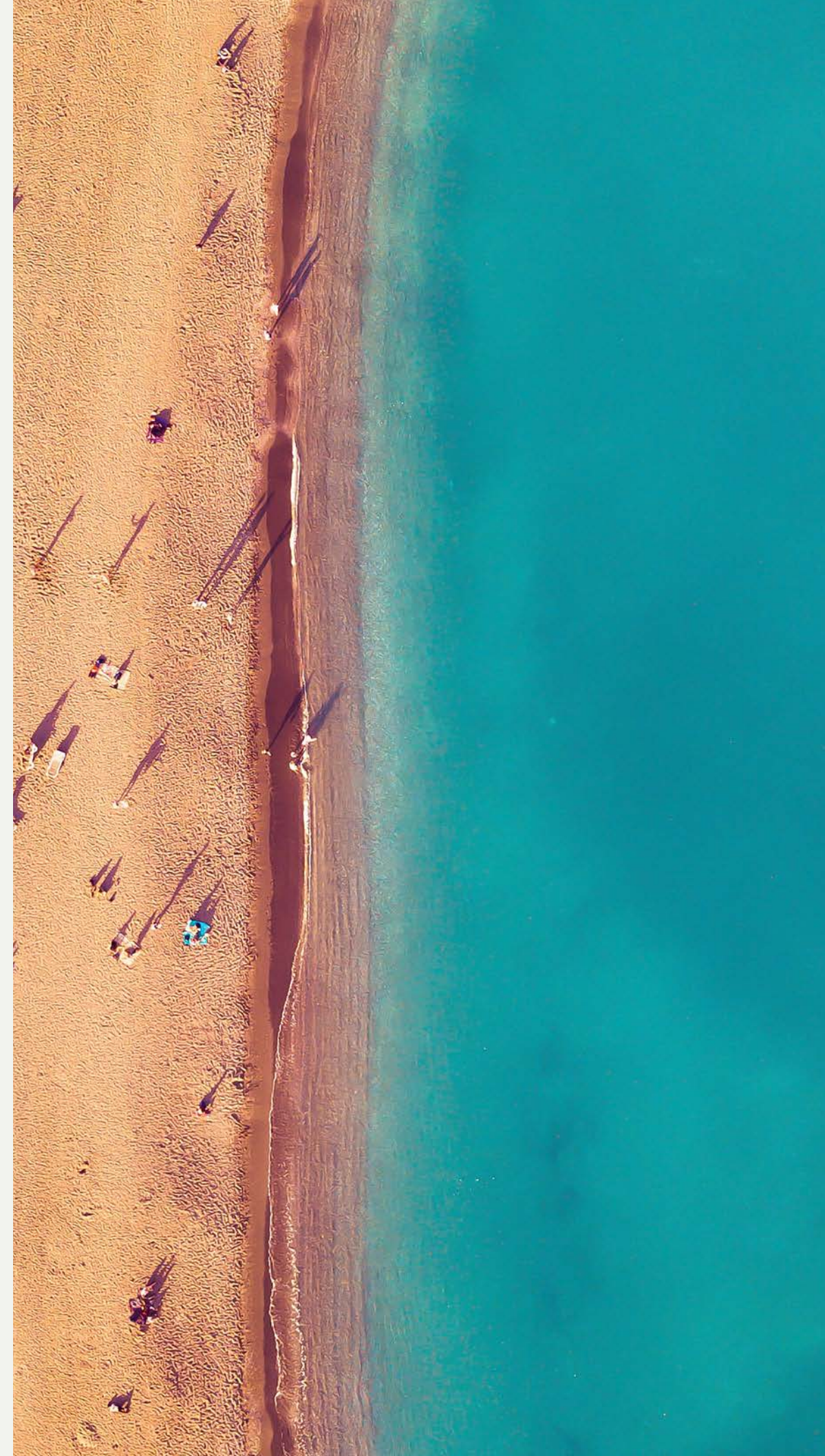
BEACH

Mesca Beach.

48

Mesca's beach opens your eyes on a floating paradise, dotted with canopies and sunbeds for the bay's tranquility to embrace the serenity of natural lagoons right before you.

Lined with sun-drenched experiences in every direction, the Beach Library invites you to enjoy a good read in the sun while the Platform Bar is an exclusive escape to unwind with a refreshing cocktail. For the more energetic, the Activities Zone is the place to splash your way through the day while your little ones enjoy an exciting array of fun packed games at the Kids Zone. Powered by top-class utilities and exceptional service, MESCA's beach is in short heaven on earth.





- 1. Beach Extension
- 2. Canopies
- 3. Sunbeds
- 4. Kids Area
- 5. Activities Deck
- 6. Beach Library
- 7. Platform Bar
- 8. Activities Zone
- 9. Events Area
- 10. Infinity Pool

HOTEL

MESCA

Signature Beach-Front Hospitality.

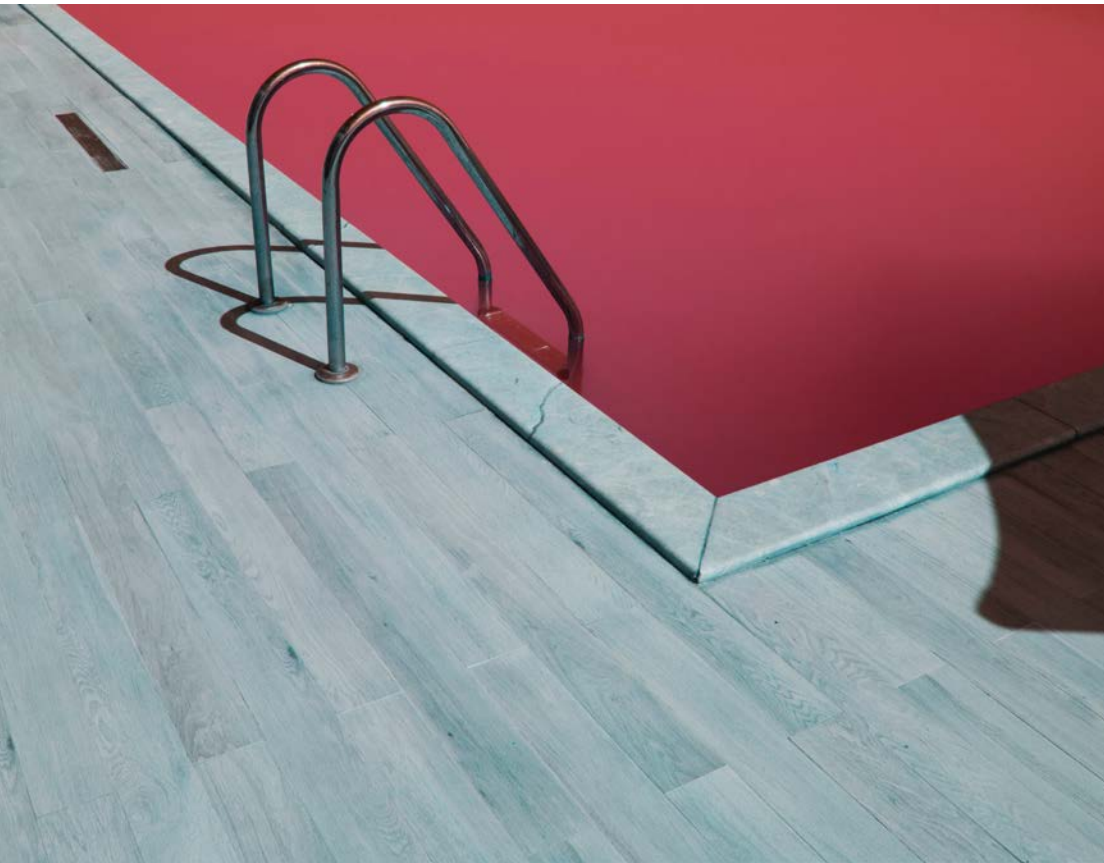
Mesca's design-led luxury hotel is an elegant amphitheatre of sea, sky and sand, redefining waterfront hospitality on the Red Sea. Inspired by nature to combine utmost comfort with worlds of unparalleled privacy, the signature five star retreat boasts streamlined spacious rooms, and a colorful array of beachfront activities, as well as round-the-clock concierge services for you to retreat with loved ones and dream with eyes wide open.



Hotel Mesca is a treasure trove of culinary wonders, inviting residents to sip on exquisite cocktails before breathtaking sunsets or under a blanket of stars with friends and loved ones.

Seamlessly interconnected with Mesca's laid-back ambience, visitors can revel in picturesque sea and lagoon views from the comfort of their own balcony while enjoying the magic of a single relaxing

moment to tap into the undiscovered worlds that lie above and below Somabay's mesmerizing sea.



H
O
T
E
L
—
M
E
S
C
A



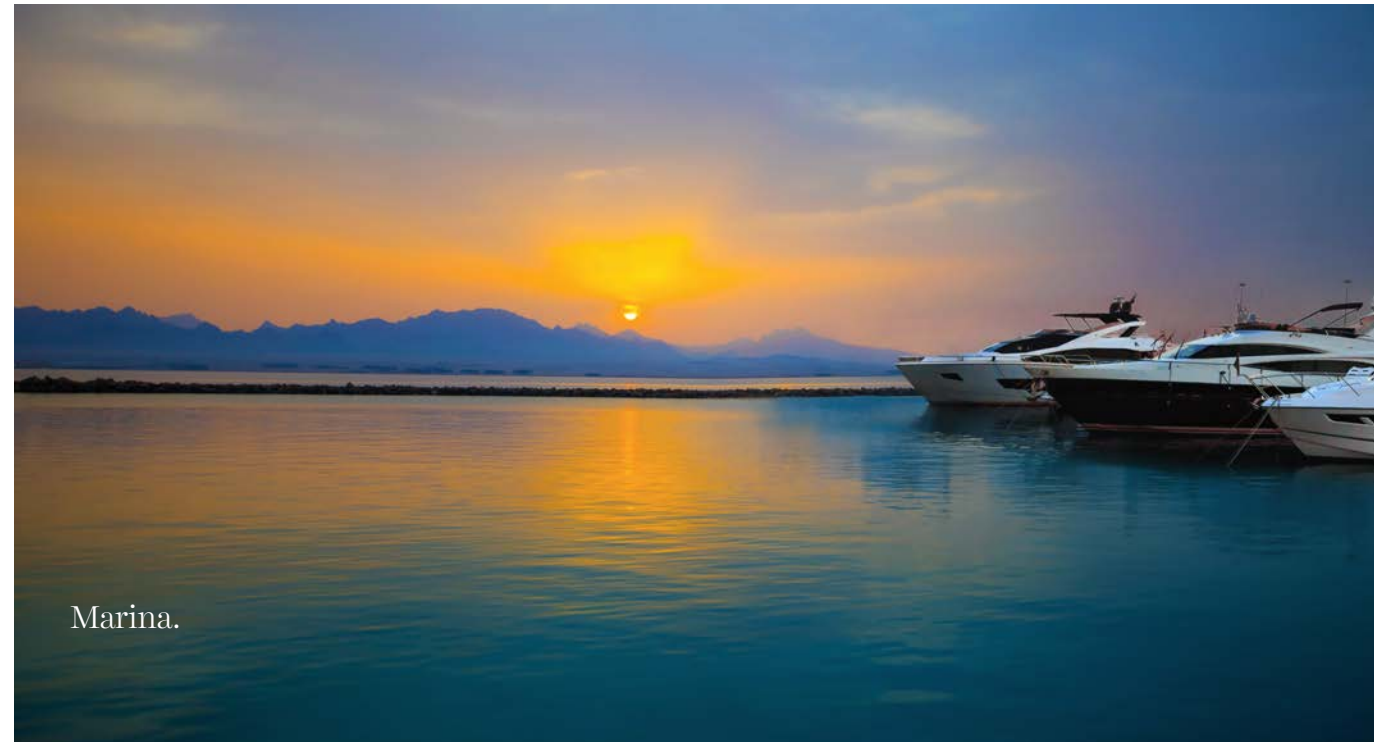
SOMABAY EXPERIENCE

The Somabay experience.

Start your day by teeing off at The Cascades Championship Golf Course then unwind at the award winning Cascades Spa and Thalasso and allow the healing powers of the Red Sea to restore balance to your body and soul. For the more adventurous, ORCA Dive Centre invites you to uncover the untapped

wonders of Egypt's marine life at the site's colorful House Reef. Kitesurfing lovers can spend a serene afternoon gliding across flat waters at 7Bft —one of the top 3 kitesurfing spots in the world— followed by a world-class dining experience at any of the destination's signature restaurants. Blessed with

dry desert winds, low humidity and a front-row seat on immaculate sea views, Somabay dictates an exciting itinerary for the whole family, transforming your everyday reality into a waking dream.



Marina.



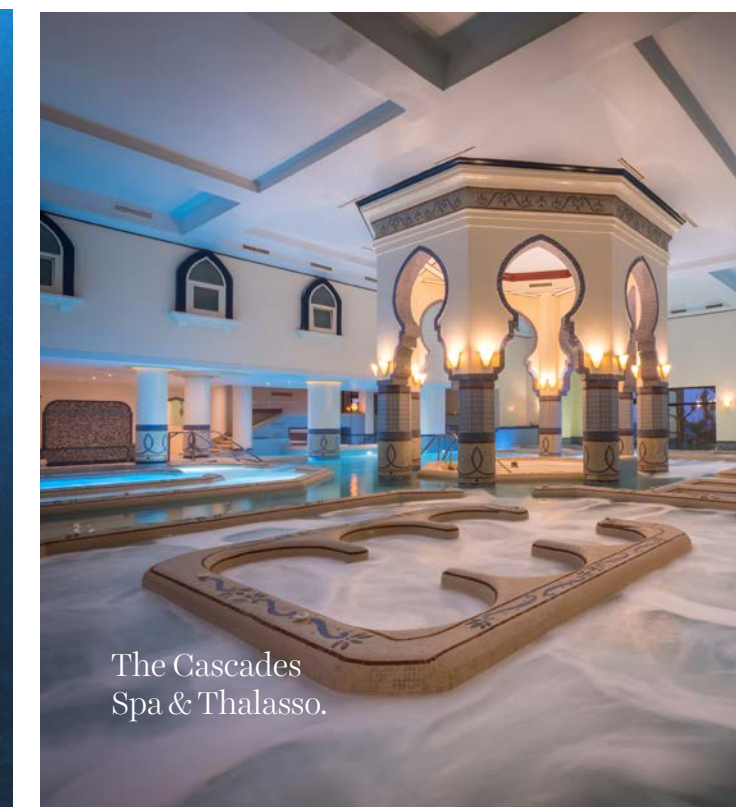
The Cascades
Championship Golf Course.



7 Bft
The Kite House.



ORCA
Dive Center.



The Cascades
Spa & Thalasso.

16390
somabay.com
info@somabayrealestate.com

