

BAYCENTRAL

r e s i d e n c e

SOMABAY

OUTSTANDING BY NATURE





A NATURALLY INVITING EXPERIENCE

Nestled on 10 million square meters of lush land, life at Somabay is where fantasy-scapes follow you wherever you go and sundrenched activities take infinite elevating forms. Expertly conceived to evoke a laid-back European feel, every aspect of the heavenly development is sympathetic to nature, painting colorful experiences around its lively marina and soul soothing jetty, so you can take recharge or decelerate. Home to 5 luxury resort hotels and a signature portfolio of residential properties, Somabay's one-of-a-kind settings with its full complement of premium amenities are the stage for incomparable experiences alongside friends and family.

SOMABAY MASTERPLAN

Bay Central ●

BAYCENTRAL
THE LUXURIOUS SIDE
OF SOMABAY

Bay Central is the most exclusive and premium spot in Somabay, oozing inescapable elegance and class. Masterplanned to surround communities' with a unique air of sophistication and grandeur, every aspect of Central Bay's residential vision seamlessly integrates in absolute harmony with the natural environment to redefine contemporary living on the Red Sea.

Boasting crystalline waters that flow over colorful gardens of corals, Bay Central directly opens onto panoramic views of sapphire beaches and tranquil lagoons, so residents can slow down and sunbathe or simply live it up by engaging in exciting beachfront activities, offered in abundance above and below Somabay's mesmerizing sea.





Future Developments

Bay Central

SOMABAY MARINA

A WORLD-CLASS MARINA AS YOUR BACKDROP

Step into Somabay's world-class Marina and lose yourself in a diverse array of authentic experiences, perfected by a treasure-trove of locally grown brands. Set to become the pulsating heart of the peninsula year-round, the Marina is an exclusive invitation to indulge in unique culinary adventures, soulful retail experiences and late-night entertainment. Sip on a cup of freshly ground Coffee at 30 North, as you enjoy a good read from the neighboring Diwan Bookstore. Uncover a pandora's box of stylish

boutiques and artisanal souvenir shops, crowned by the finest handcrafted home accessories displayed at Rax. Indulge in juicy burger buns served all day long at Burger & Shrimp, freshly prepared homemade Pizza served at Farina or sample tantalizing oriental dishes, perfected by Baladina. For friends wishing to spend a memorable night out, SoBar is the place to dine under a blanket of stars, perfected by signature delights and a flowing panorama of the Red Sea.



BAY CENTRAL SITE PLAN

DISCLAIMER 1. Drawings are not to scale. 2. The architectural details, dimensions and area in this plan are based on Schematic Design information only, and final As-Built conditions may vary. 3. All units are sold as unfurnished apartments, without furniture and furnishings, without white goods provisions, etc. 4. All images used are for illustrative purposes only and do not represent the actual size, features, specifications, fittings, and furnishings. 5. Somabay reserves the right to make revisions/alterations, at its absolute discretion, and without liability.



DISCLAIMER 1. Drawings are not to scale. 2. The architectural details, dimensions and area in this plan are based on Schematic Design information only, and final As-Built conditions may vary. 3. All units are sold as unfurnished apartments, without furniture and furnishings, without white goods provisions, etc. 4. All images used are for illustrative purposes only and do not represent the actual size, features, specifications, fittings, and furnishings. 5. Somabay reserves the right to make revisions/alterations, at its absolute discretion, and without liability.



DISCLAIMER 1.Drawings are not to scale. 2.The architectural details, dimensions and area in this plan are based on Schematic Design information only, and final As-Built conditions may vary. 3.All units are sold as unfurnished apartments, without furniture and furnishings, without white goods provisions, etc. 4.All images used are for illustrative purposes only and do not represent the actual size, features, specifications, fittings, and furnishings. 5.Somabay reserves the right to make revisions/alterations, at its absolute discretion, and without liability.



INTRODUCING BAYCENTRAL RESIDENCE

Aesthetically designed in harmony with its natural surroundings, Baycentral Residence is an iconic work of architecture masterplanned to invite floating sea and lagoon views inside. Boasting a crisp and contemporary design, the building's facade is marked by an alternating system of balconies to offer private terraces and brise-soleil, framing 360 degree bay views while providing efficient blocks that optimize natural light. The building's design lends flexibility to unit types, guaranteeing high qualities of living that elegantly respond to the masterplan.



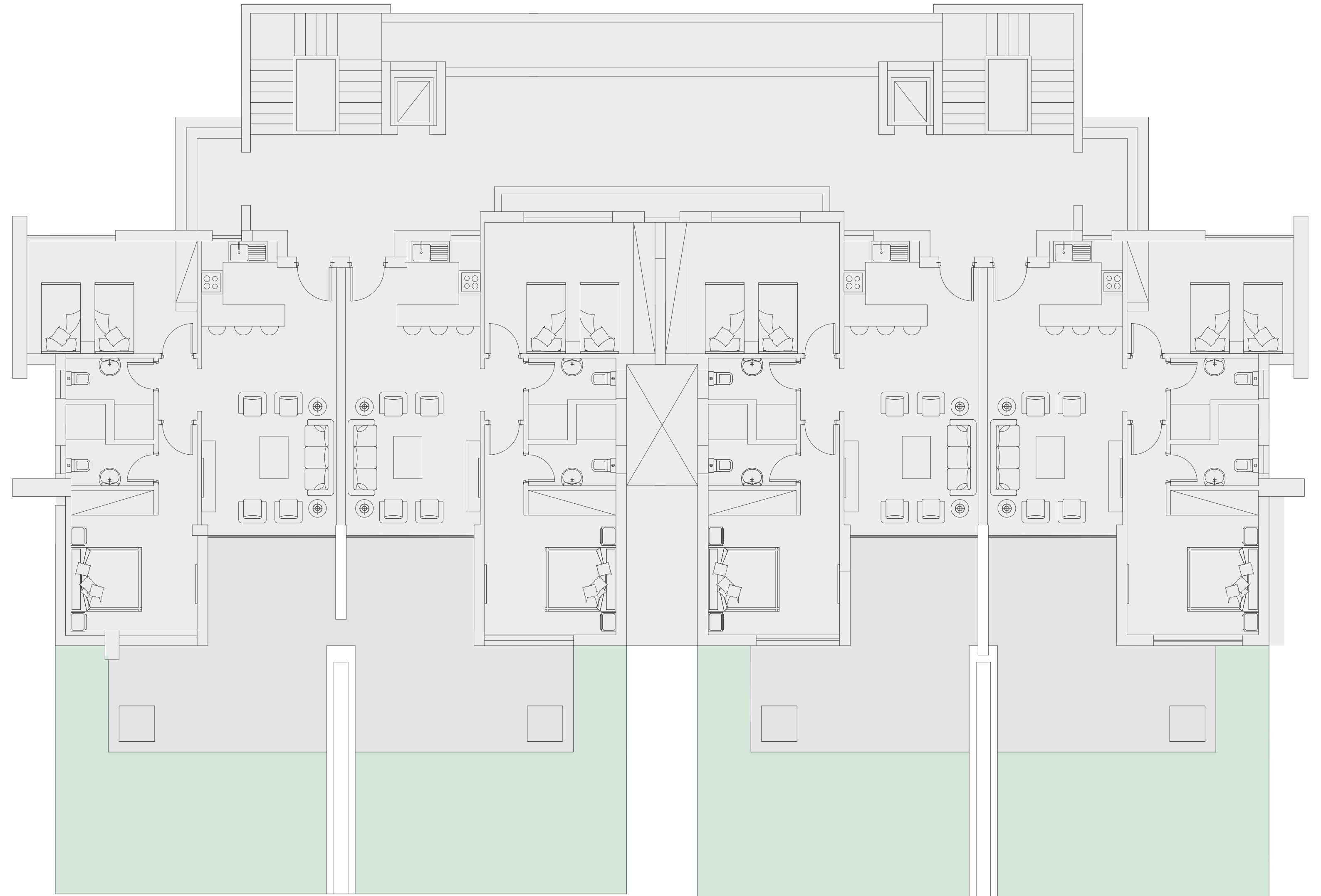
DISCLAIMER 1. Drawings are not to scale. 2. The architectural details, dimensions and area in this plan are based on Schematic Design information only, and final As-Built conditions may vary. 3. All units are sold as unfurnished apartments, without furniture and furnishings, without white goods provisions, etc. 4. All images used are for illustrative purposes only and do not represent the actual size, features, specifications, fittings, and furnishings. 5. Somabay reserves the right to make revisions/alterations, at its absolute discretion, and without liability.

DISCLAIMER 1.Drawings are not to scale. 2.The architectural details, dimensions and area in this plan are based on Schematic Design information only, and final As-Built conditions may vary. 3.All units are sold as unfurnished apartments, without furniture and furnishings, without white goods provisions, etc. 4.All images used are for illustrative purposes only and do not represent the actual size, features, specifications, fittings, and furnishings. 5.Somabay reserves the right to make revisions/alterations, at its absolute discretion, and without liability.



Floor Plans

Ground Floor



DISCLAIMER 1. Drawings are not to scale. 2. The architectural details, dimensions and area in this plan are based on Schematic Design information only, and final As-Built conditions may vary. 3. All units are sold as unfurnished apartments, without furniture and furnishings, without white goods provisions, etc. 4. All images used are for illustrative purposes only and do not represent the actual size, features, specifications, fittings, and furnishings. 5. Somabay reserves the right to make revisions/alterations, at its absolute discretion, and without liability.

2 Bedrooms with Garden

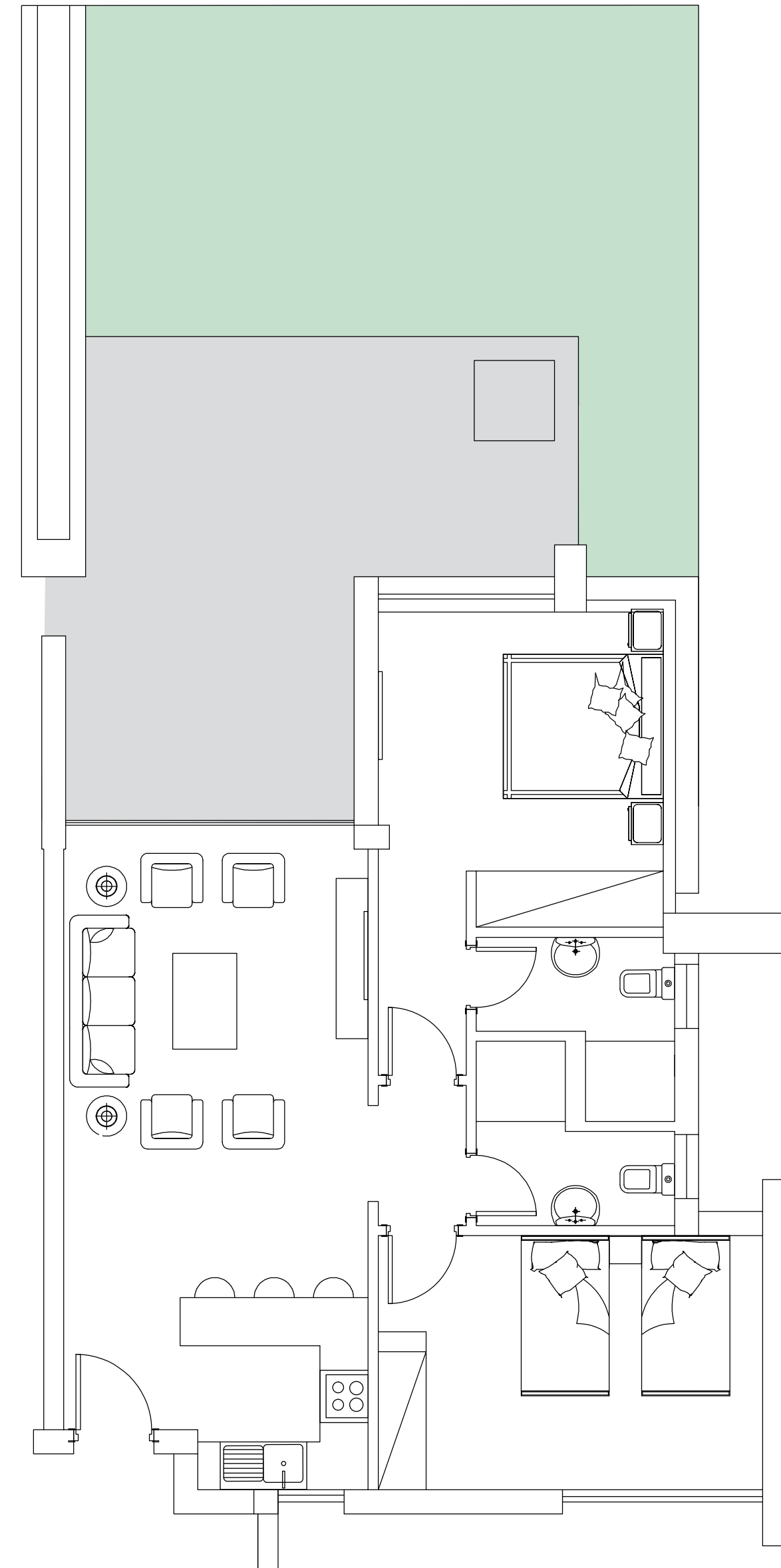
DISCLAIMER 1. Drawings are not to scale. 2. The architectural details, dimensions and area in this plan are based on Schematic Design information only, and final As-Built conditions may vary. 3. All units are sold as unfurnished apartments, without furniture and furnishings, without white goods provisions, etc. 4. All images used are for illustrative purposes only and do not represent the actual size, features, specifications, fittings, and furnishings. 5. Somabay reserves the right to make revisions/alterations, at its absolute discretion, and without liability.



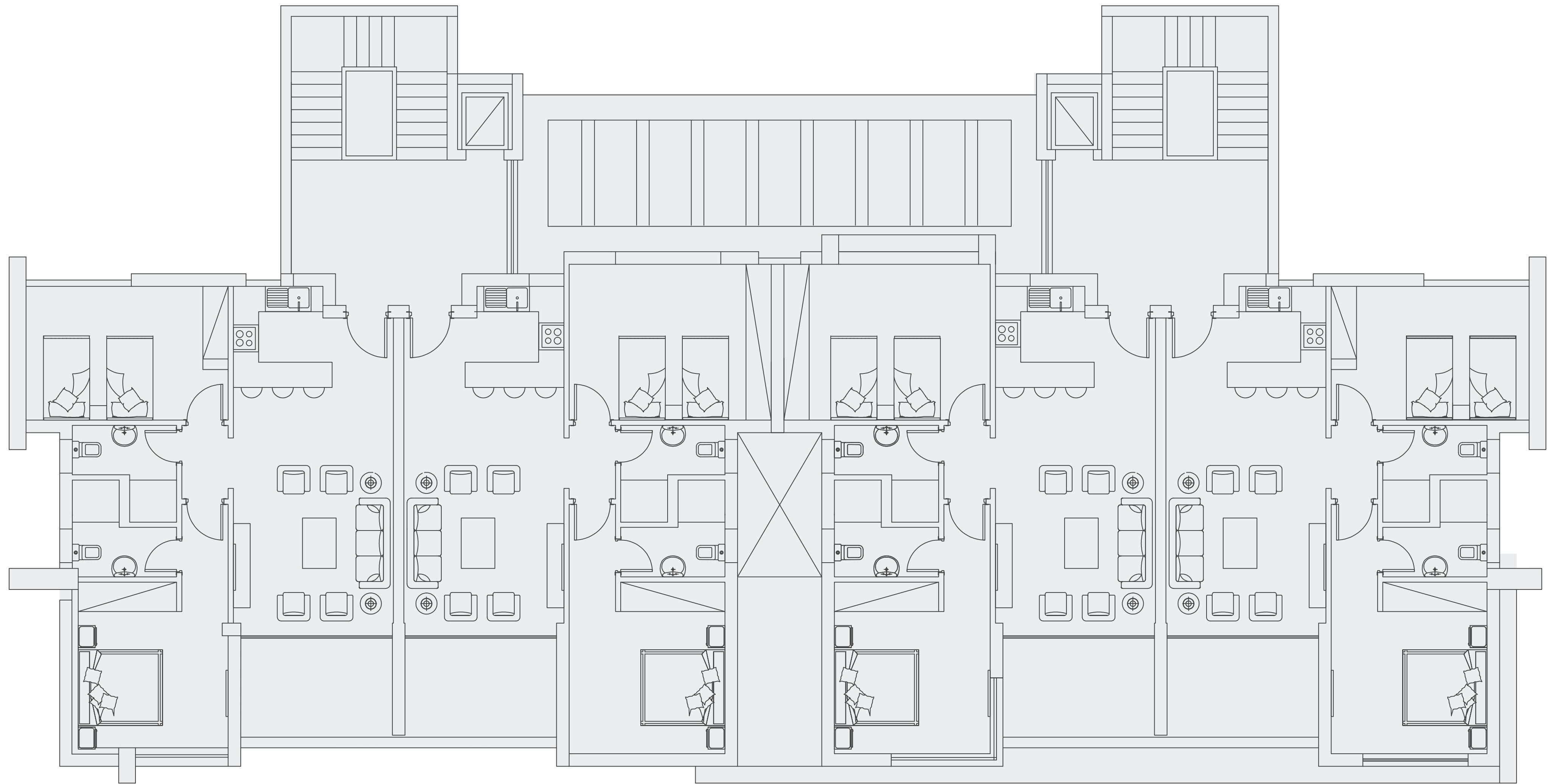
2 Bedrooms with Garden

Indoor Area	103 m ²
Terrace Area	21 m ²
BUA	124 m ²

DISCLAIMER 1.Drawings are not to scale. 2.The architectural details, dimensions and area in this plan are based on Schematic Design information only, and final As-Built conditions may vary. 3.All units are sold as unfurnished apartments, without furniture and furnishings, without white goods provisions, etc. 4.All images used are for illustrative purposes only and do not represent the actual size, features, specifications, fittings, and furnishings. 5.Somabay reserves the right to make revisions/alterations, at its absolute discretion, and without liability.



First Floor



DISCLAIMER 1.Drawings are not to scale. 2.The architectural details, dimensions and area in this plan are based on Schematic Design information only, and final As-Built conditions may vary. 3.All units are sold as unfurnished apartments, without furniture and furnishings, without white goods provisions, etc. 4.All images used are for illustrative purposes only and do not represent the actual size, features, specifications, fittings, and furnishings. 5.Somabay reserves the right to make revisions/alterations, at its absolute discretion, and without liability.

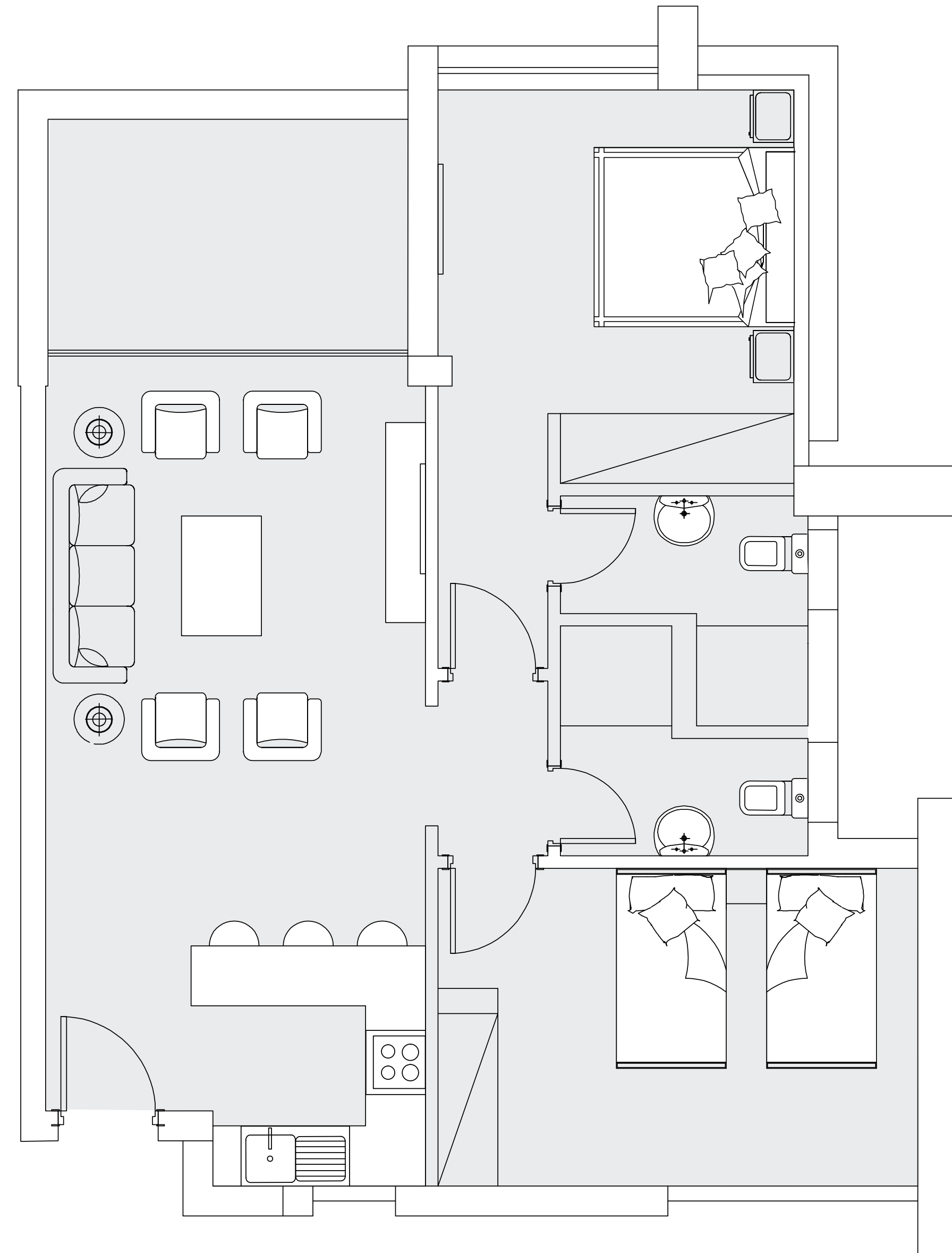
2 Bedrooms

DISCLAIMER 1. Drawings are not to scale. 2. The architectural details, dimensions and area in this plan are based on Schematic Design information only, and final As-Built conditions may vary. 3. All units are sold as unfurnished apartments, without furniture and furnishings, without white goods provisions, etc. 4. All images used are for illustrative purposes only and do not represent the actual size, features, specifications, fittings, and furnishings. 5. Somabay reserves the right to make revisions/alterations, at its absolute discretion, and without liability.



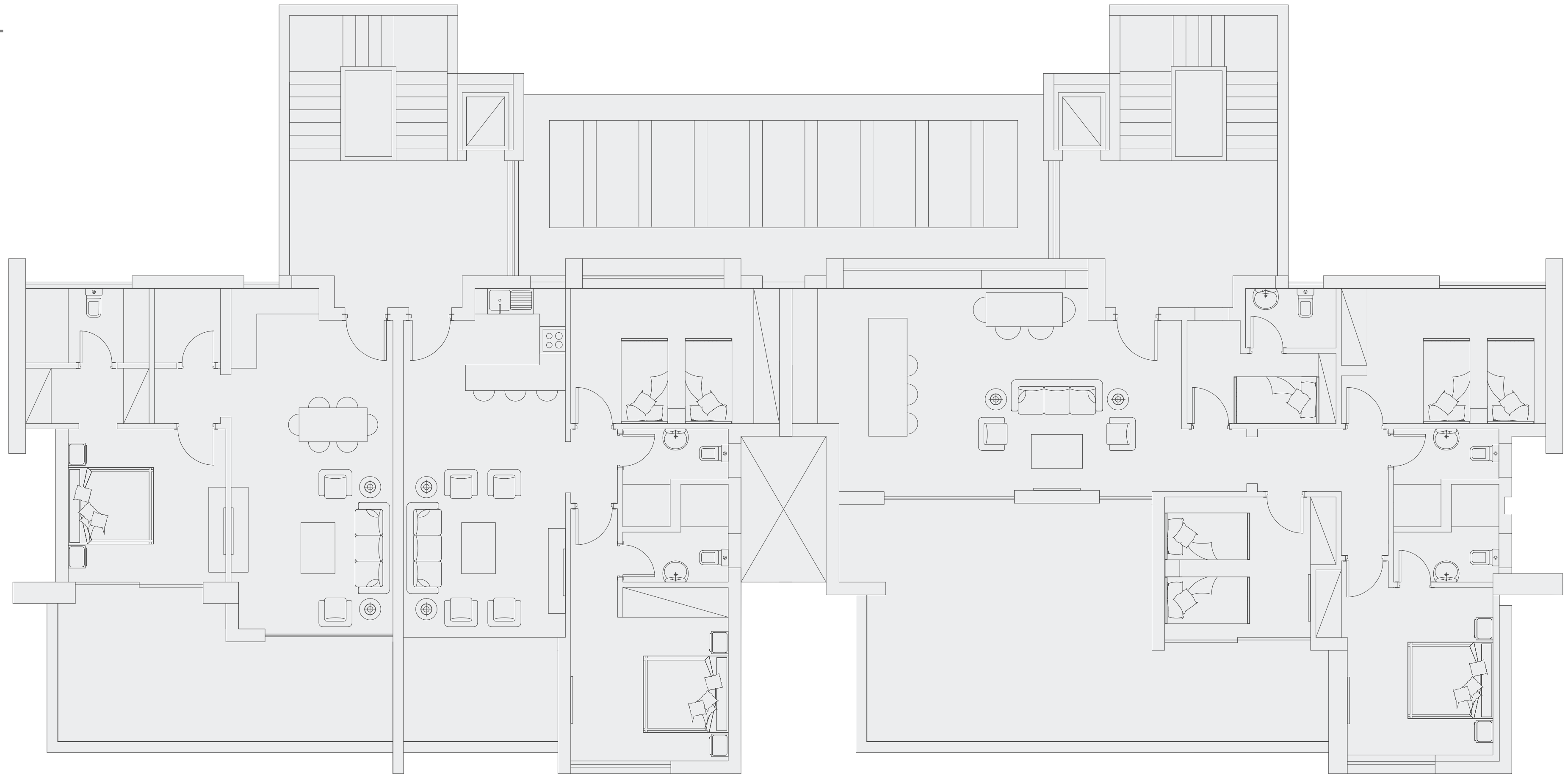
2 Bedrooms

Indoor Area	102 m ²
Terrace Area	10 m ²
BUA	112 m ²



DISCLAIMER 1. Drawings are not to scale. 2. The architectural details, dimensions and area in this plan are based on Schematic Design information only, and final As-Built conditions may vary. 3. All units are sold as unfurnished apartments, without furniture and furnishings, without white goods provisions, etc. 4. All images used are for illustrative purposes only and do not represent the actual size, features, specifications, fittings, and furnishings. 5. Somabay reserves the right to make revisions/alterations, at its absolute discretion, and without liability.

Second Floor - Option 1



DISCLAIMER 1.Drawings are not to scale. 2.The architectural details, dimensions and area in this plan are based on Schematic Design information only, and final As-Built conditions may vary. 3.All units are sold as unfurnished apartments, without furniture and furnishings, without white goods provisions, etc. 4.All images used are for illustrative purposes only and do not represent the actual size, features, specifications, fittings, and furnishings. 5.Somabay reserves the right to make revisions/alterations, at its absolute discretion, and without liability.

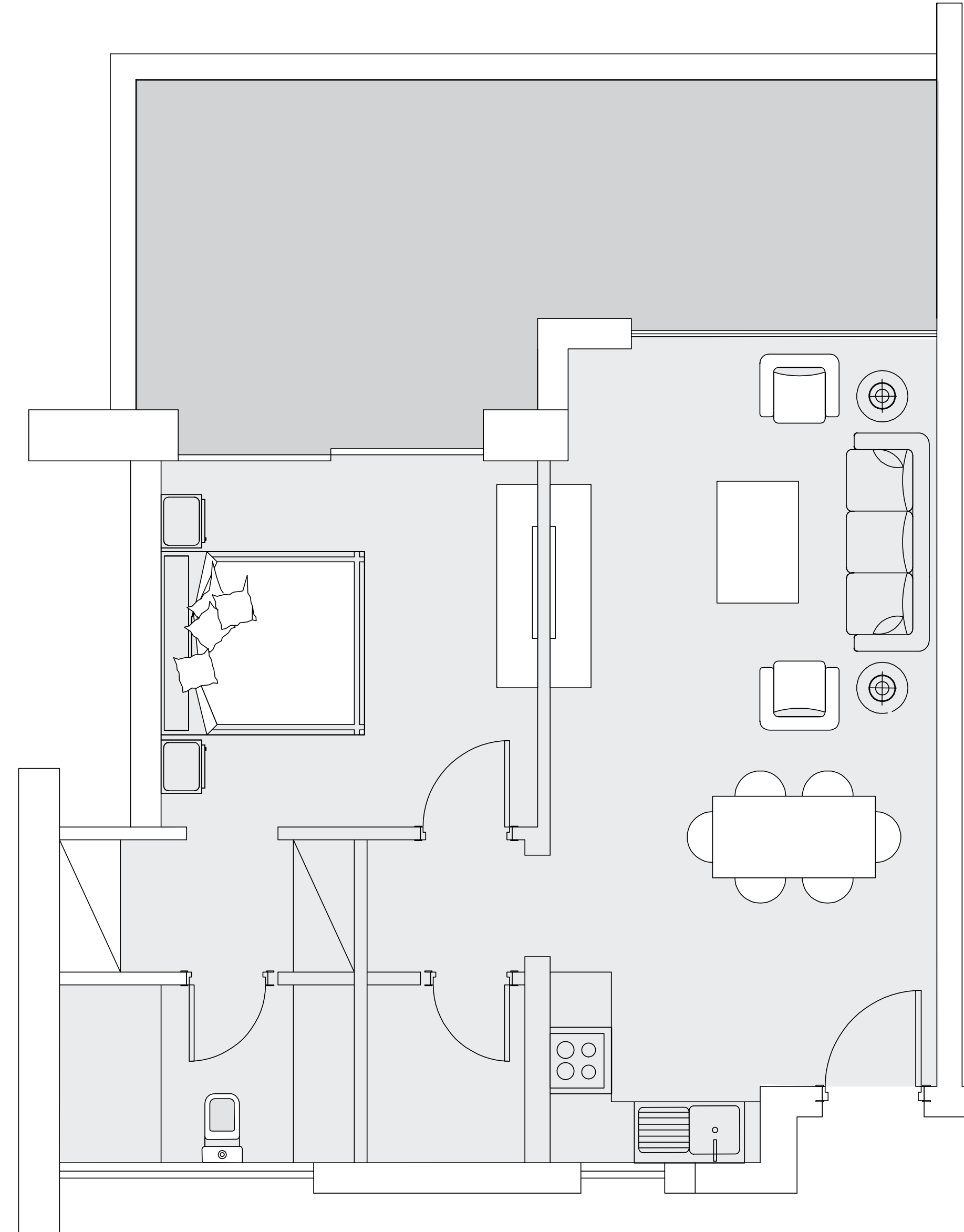
1 Bedroom

DISCLAIMER 1.Drawings are not to scale. 2.The architectural details, dimensions and area in this plan are based on Schematic Design information only, and final As-Built conditions may vary. 3.All units are sold as unfurnished apartments, without furniture and furnishings, without white goods provisions, etc. 4.All images used are for illustrative purposes only and do not represent the actual size, features, specifications, fittings, and furnishings. 5.Somabay reserves the right to make revisions/alterations, at its absolute discretion, and without liability.



1 Bedroom

Indoor Area	84 m ²
Terrace Area	26 m ²
BUA	110 m ²



DISCLAIMER 1.Drawings are not to scale. 2.The architectural details, dimensions and area in this plan are based on Schematic Design information only, and final As-Built conditions may vary. 3.All units are sold as unfurnished apartments, without furniture and furnishings, without white goods provisions, etc. 4.All images used are for illustrative purposes only and do not represent the actual size, features, specifications, fittings, and furnishings. 5.Somabay reserves the right to make revisions/alterations, at its absolute discretion, and without liability.

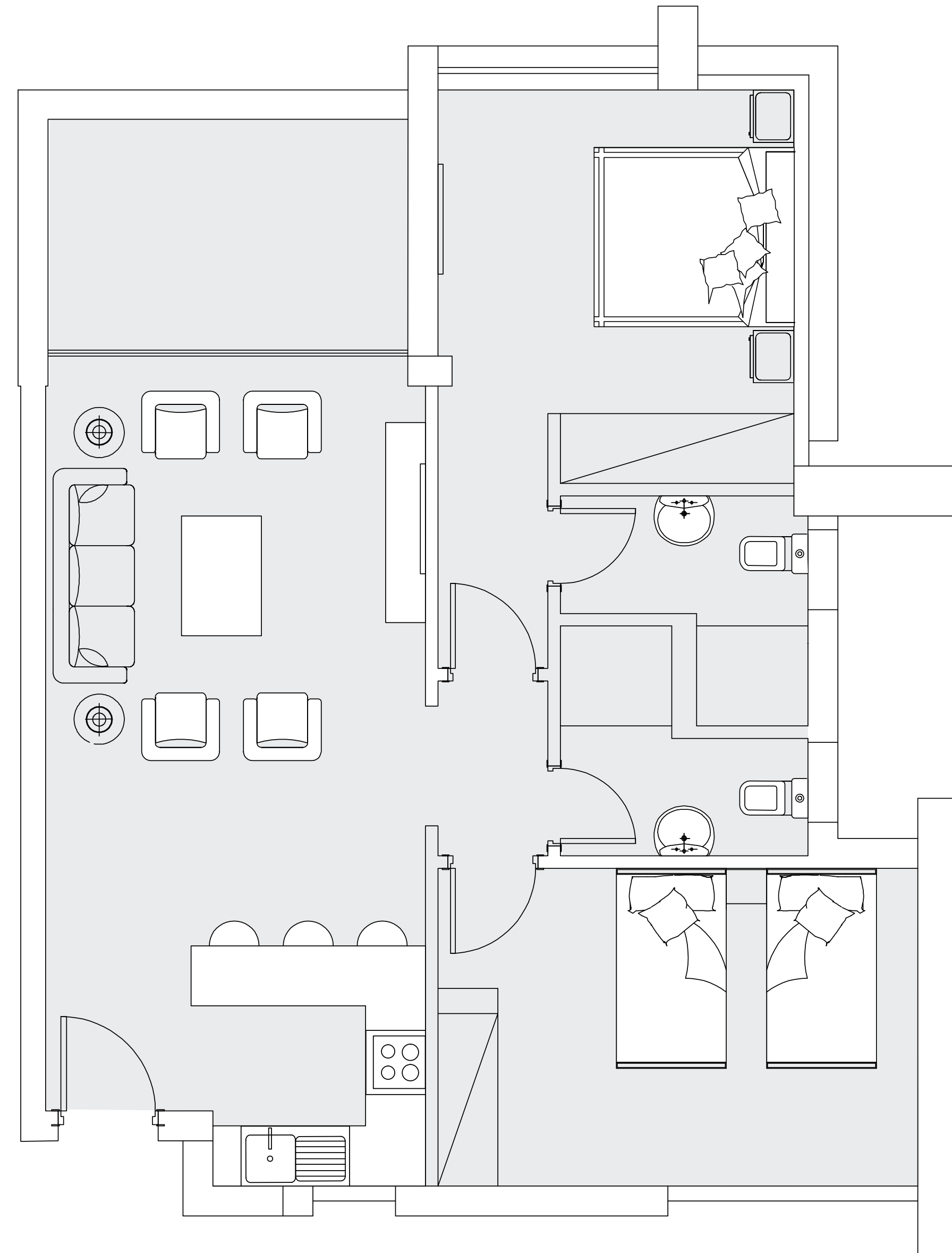
2 Bedrooms

DISCLAIMER 1. Drawings are not to scale. 2. The architectural details, dimensions and area in this plan are based on Schematic Design information only, and final As-Built conditions may vary. 3. All units are sold as unfurnished apartments, without furniture and furnishings, without white goods provisions, etc. 4. All images used are for illustrative purposes only and do not represent the actual size, features, specifications, fittings, and furnishings. 5. Somabay reserves the right to make revisions/alterations, at its absolute discretion, and without liability.



2 Bedrooms

Indoor Area	102 m ²
Terrace Area	10 m ²
BUA	112 m ²



DISCLAIMER 1.Drawings are not to scale. 2.The architectural details, dimensions and area in this plan are based on Schematic Design information only, and final As-Built conditions may vary. 3.All units are sold as unfurnished apartments, without furniture and furnishings, without white goods provisions, etc. 4.All images used are for illustrative purposes only and do not represent the actual size, features, specifications, fittings, and furnishings. 5.Somabay reserves the right to make revisions/alterations, at its absolute discretion, and without liability.

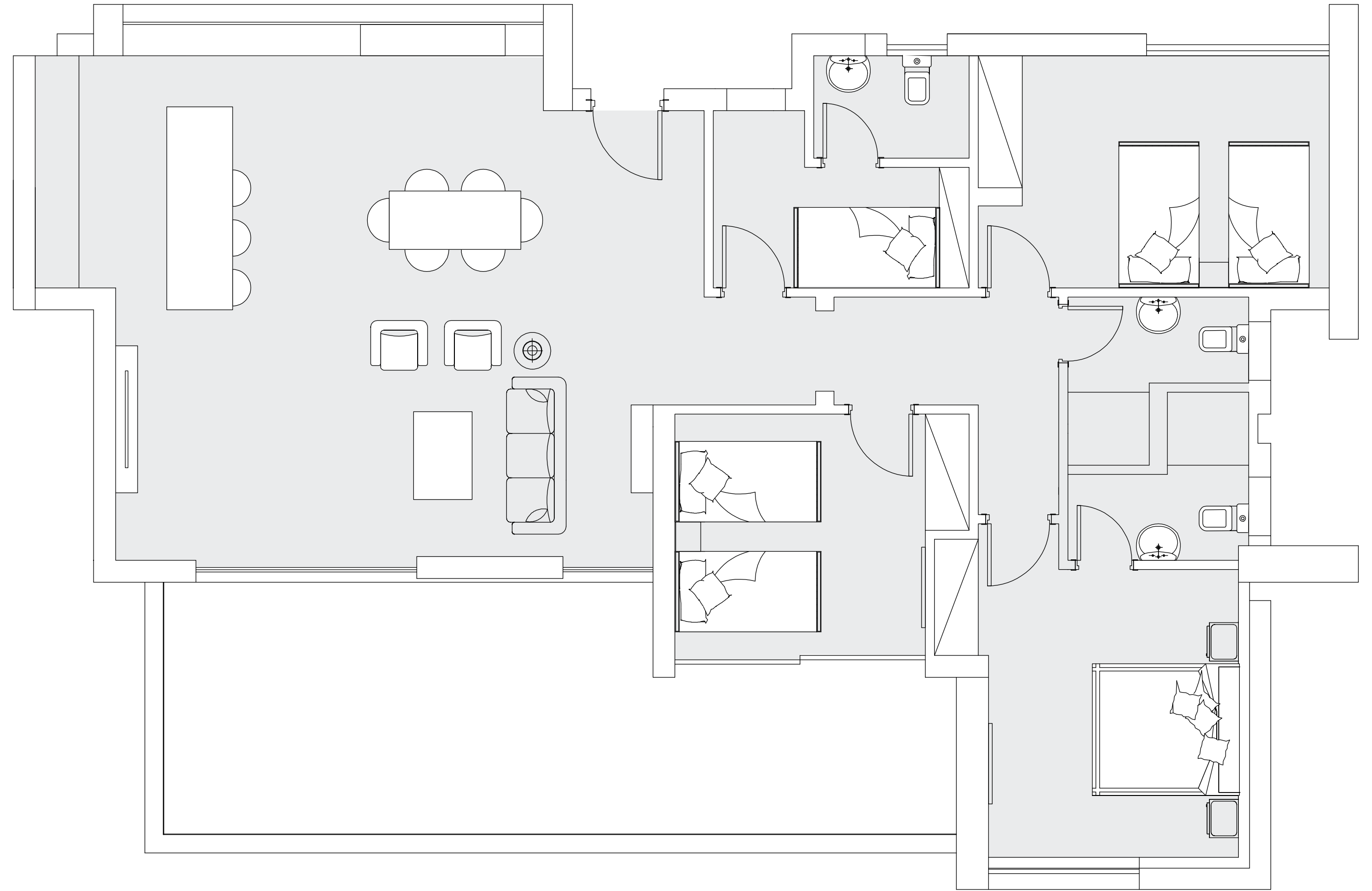
3 Bedrooms

DISCLAIMER 1. Drawings are not to scale. 2. The architectural details, dimensions and area in this plan are based on Schematic Design information only, and final As-Built conditions may vary. 3. All units are sold as unfurnished apartments, without furniture and furnishings, without white goods provisions, etc. 4. All images used are for illustrative purposes only and do not represent the actual size, features, specifications, fittings, and furnishings. 5. Somabay reserves the right to make revisions/alterations, at its absolute discretion, and without liability.



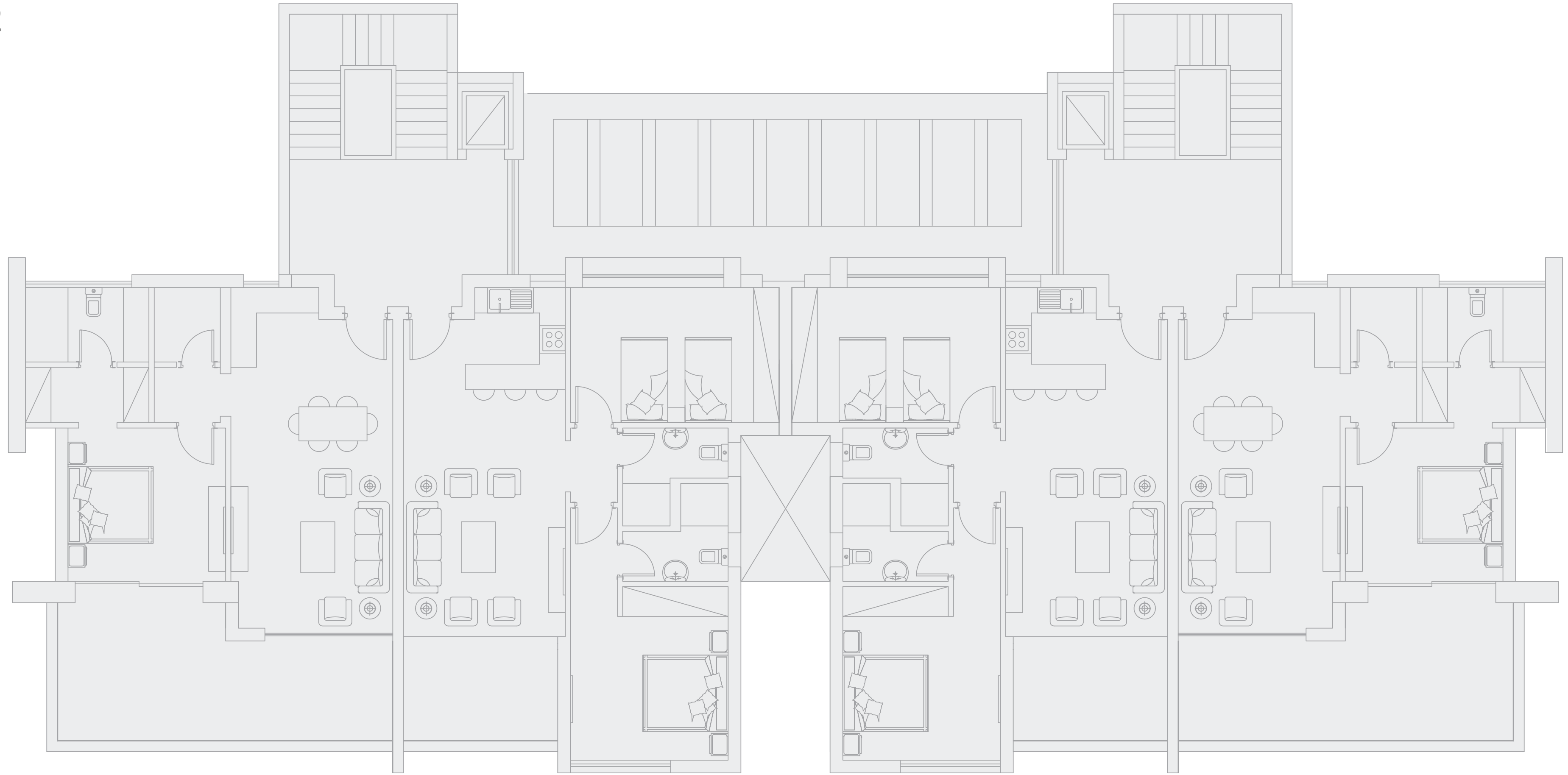
3 Bedrooms

Indoor Area	186 m ²
Terrace Area	36 m ²
BUA	222 m ²



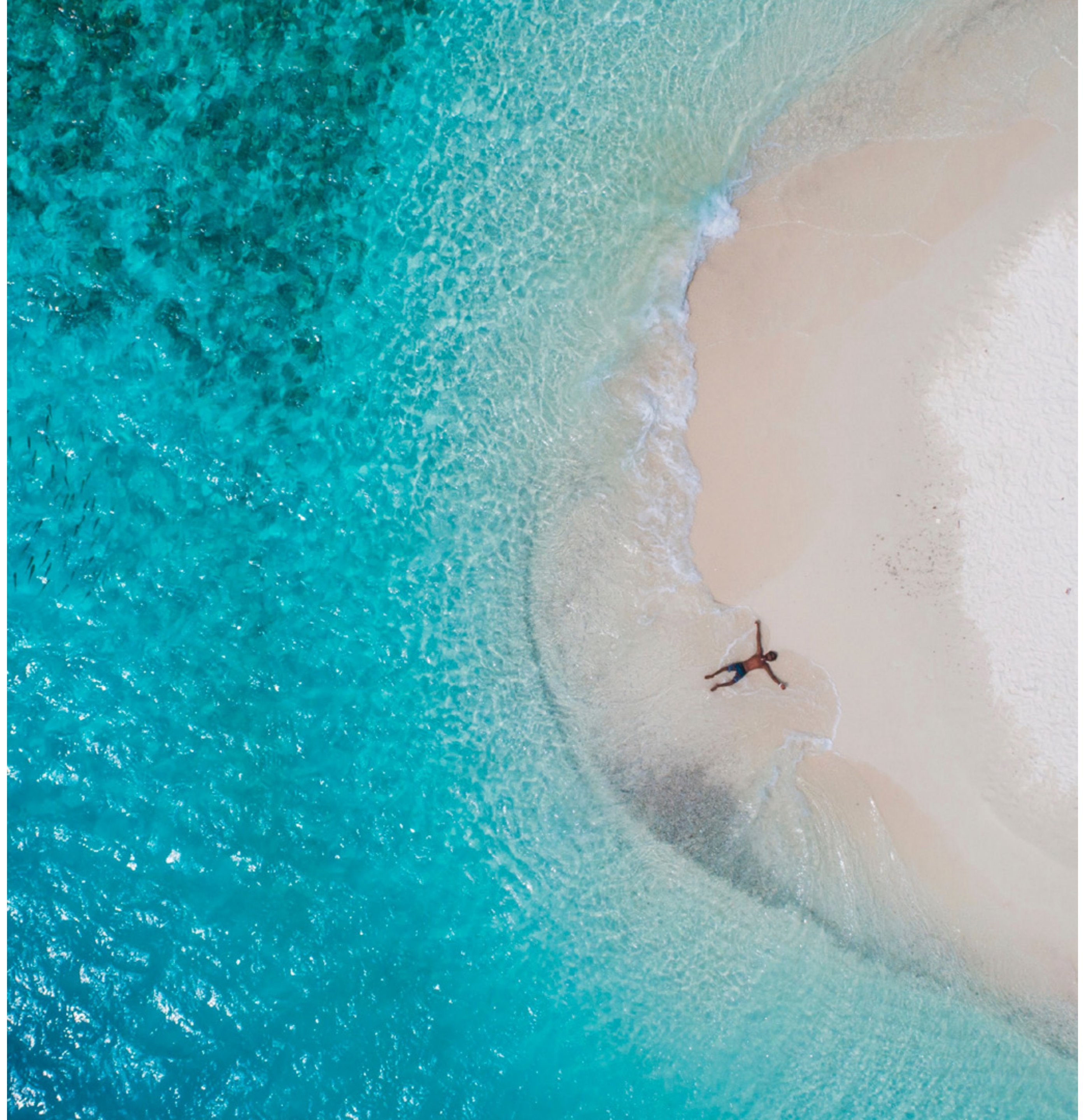
DISCLAIMER 1.Drawings are not to scale. 2.The architectural details, dimensions and area in this plan are based on Schematic Design information only, and final As-Built conditions may vary. 3.All units are sold as unfurnished apartments, without furniture and furnishings, without white goods provisions, etc. 4.All images used are for illustrative purposes only and do not represent the actual size, features, specifications, fittings, and furnishings. 5.Somabay reserves the right to make revisions/alterations, at its absolute discretion, and without liability.

Second Floor - Option 2



DISCLAIMER 1. Drawings are not to scale. 2. The architectural details, dimensions and area in this plan are based on Schematic Design information only, and final As-Built conditions may vary. 3. All units are sold as unfurnished apartments, without furniture and furnishings, without white goods provisions, etc. 4. All images used are for illustrative purposes only and do not represent the actual size, features, specifications, fittings, and furnishings. 5. Somabay reserves the right to make revisions/alterations, at its absolute discretion, and without liability.

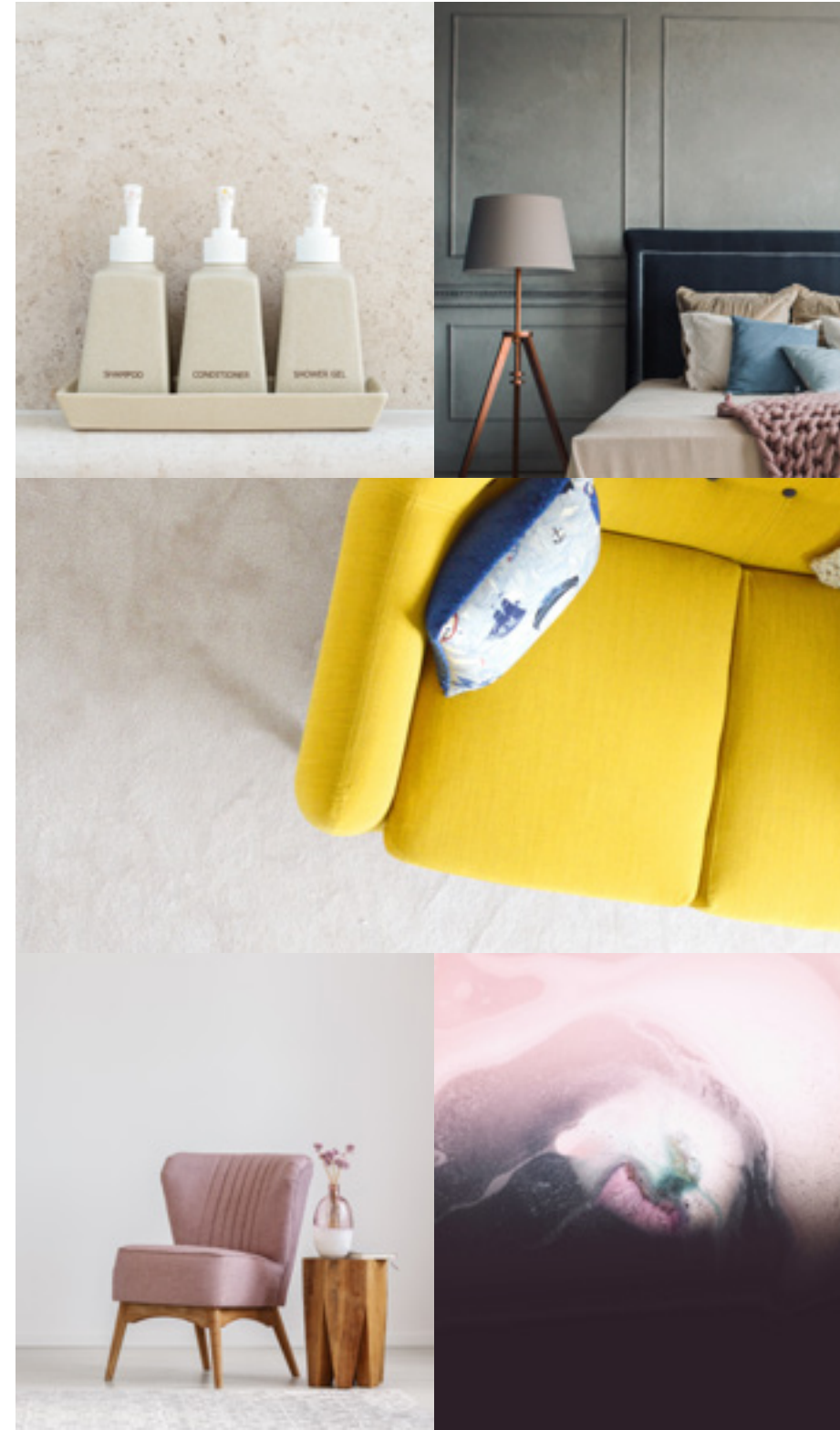
*A World of
Leisure Amenities
at Your Door.*





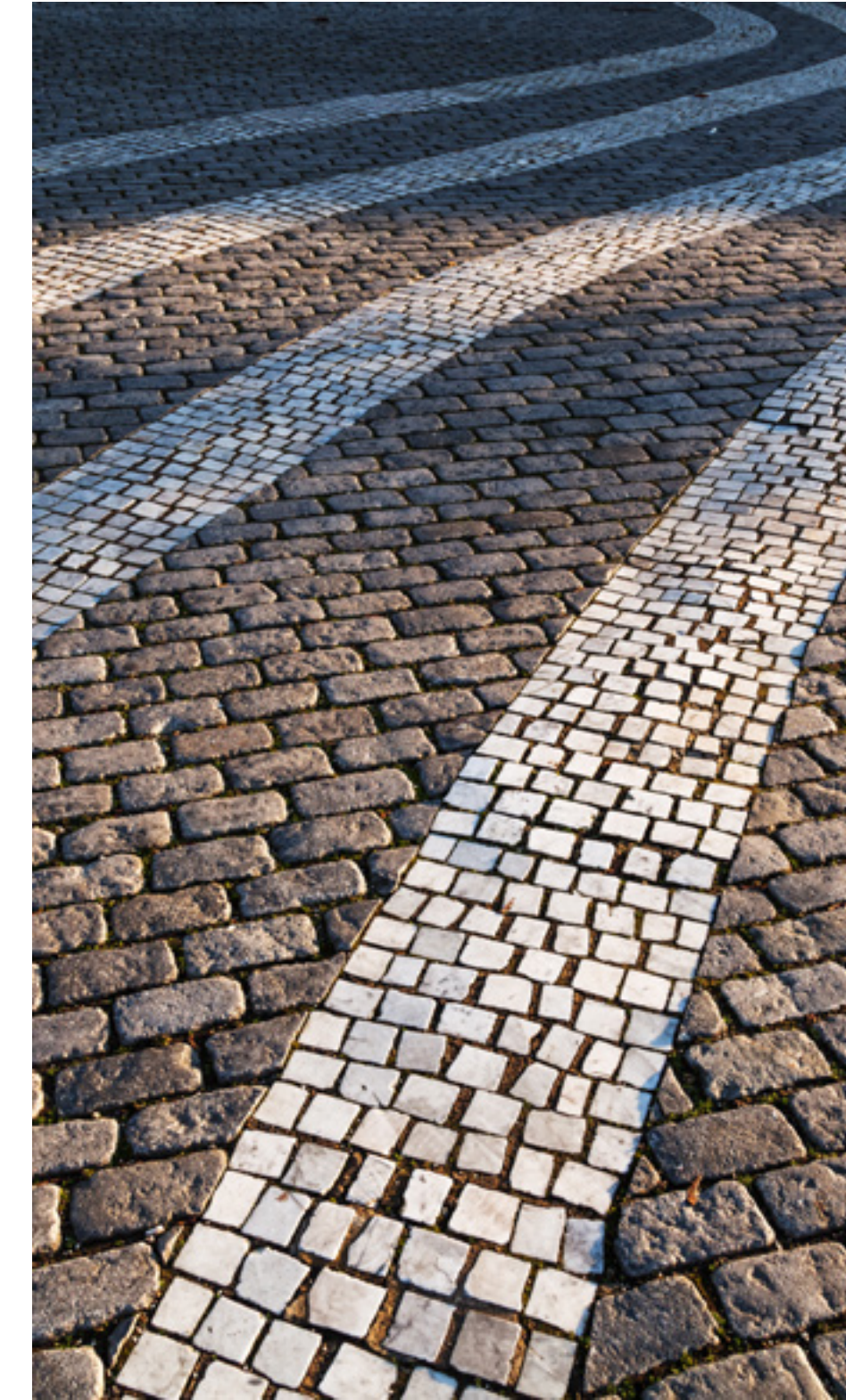
Elevator

Designed with residents' comfort in mind, lighthouse boasts private elevators for ultimate accessibility & convenience.



Stayr

Stayr grants residents exclusive access to world-class hospitality, offering A to Z luxury on par with elegant hotels for a hassle-free living experience - however long you wish to stay. Introducing round-the-clock concierge services, Stayr supports homeowners with travel, entertainment and business arrangements through a resourceful team. To ensure, you do not lift a finger during your stay, Stayr also offers house-keeping services to provide a home-away-from-home experience not found elsewhere



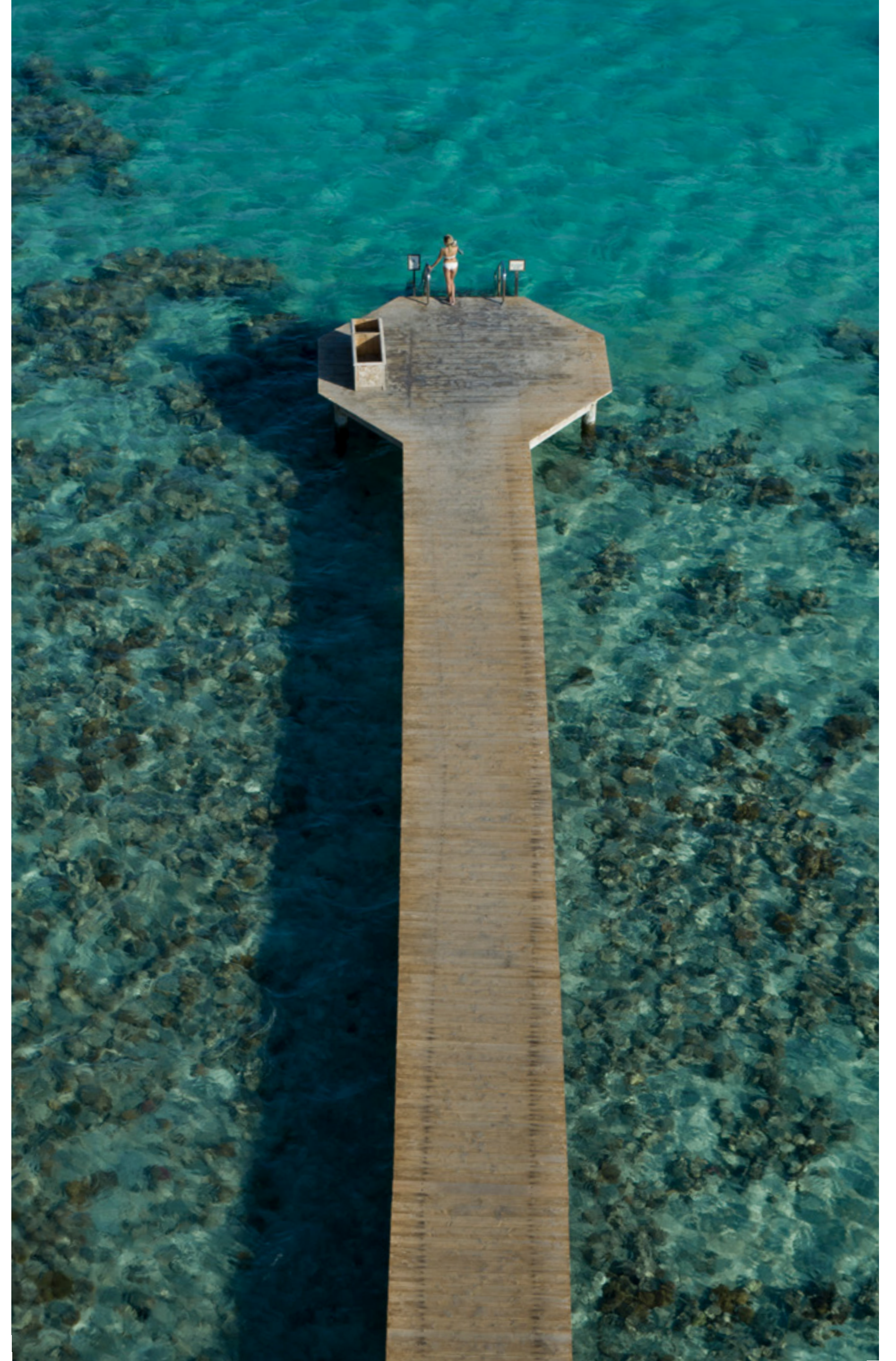
Promenade

Stretching along spectacular sea and lagoon views, the promenade is a pedestrian friendly zone inviting residents to take in somabay's captivating surroundings while enjoying a brisk morning walk or meditating on the soothing sound of chirping birds and crashing waves.

THE SOMABAY EXPERIENCE.

Start your day by teeing off at The Cascades Championship Golf Course then unwind at the award winning Cascades Spa and Thalasso and allow the healing powers of the Red Sea to restore balance to your body and soul.

For the more adventurous, ORCA Dive Centre invites you to uncover the untapped wonders of Egypt's marine life at the site's colorful House Reef. Kitesurfing lovers can spend a serene afternoon gliding across flat waters at 7Bft —one of the top 3 kitesurfing spots in the world— followed by a world-class dining experience at any of the destination's signature restaurants. Blessed with dry desert winds, low humidity and a front-row seat on immaculate sea views, Somabay dictates an exciting itinerary for the whole family, transforming your everyday reality into a waking dream.



The Cascades Championship Golf Course.

Opening onto spectacular 360 degree views of lush golf greens, azure Red Sea hues and earthy desert tones, The Cascades 18 hole, par 72 Championship Golf Course is designed by legendary golfer Gary Player to ignite guests' love for the sport. Ranked as one of the leading golf courses in Africa, The Cascades Championship Golf Course boasts a state-of-the-art academy, guaranteeing non-stop excitement for amateurs and professionals alike.



7 Bft The Kite House.

Spend your day gliding across flat idyllic waters at one of the top 3 Kite Surfing spots in the world, offering 365 days of incomparable wind and natural beauty to inspire. Opening onto a tranquil bay, Somabay embraces pristine beaches and perfect off-shore and side-shore winds ranging from 4 to 8 Bft. 7Bft's professional team of instructors are committed to making your kite experience safe, fun and complete by offering exclusive teaching and testing weeks with the latest Naish and Carved equipment. The Kitehouse is an ideal sea-side escape, offering everything you need from fresh food and refreshing cocktails, as you take in heavenly bay views from the restaurant or bar's open terrace.



ORCA Dive Center.

Escape for hours at sea with ORCA Dive Center and allow Somabay's captivating dive sites and renowned colorful House Reef to leave you in awe. Ideal for beginners and advanced divers alike, our purpose-built diving center is one of the largest and most well-equipped in the Red Sea, led by an international team of instructors who ensure you explore a treasure trove of wonders with safety and ease. Easily accessible via a 420 meter long jetty that stretches over a kilometer, the House Reef is serviced by electric cards, available to transport equipment and divers for an ultimate fun and hassle-free experience like no other. Boasting a large turquoise-blue lagoon with sheltered waters ideal for training, ORCA dive center is fully equipped with top-of-the-line gear, in addition to snorkeling equipment, in-house photo and video facilities to meet all the needs of the avid underwater photographer and explorer.



The Cascades Spa & Thalasso.

Luxury award winner 'The Cascades Spa & Thalasso' invites you to uncover the most exquisite spa experience in the Middle East. Rolling out on 7,500 m², the spa is an oasis of calm, crowning a front-row seat on the Red Sea's pristine coastline while boasting 65 treatment rooms spanning traditional massages, beauty treatments, hydrotherapy and aesthetic procedures. Take a plunge in our 830 m² Thalasso-Tonic hydrotherapy pool and allow the wonders of the Red Sea to restore balance to your mind, body and soul.



Somabay Marina.

Somabay's comprehensive Marina is a peaceful haven for immaculate sea views and a unique location for nautical fans wishing to dock their boats at a competitive price. Boasting world-class services and conditions for mooring, the Marina offers a wide array of quality services and facilities directly available at quayside, so you can enjoy sailing smoothly through life.



White Beach.

Opening onto a secluded tranquil bay, White Beach's pristine beach stretches along Somabay's azure coastline to create a timeless experience in paradise for those wishing to decelerate, swim or sunbathe in a one-of-a-kind luxury beachfront setting. When the sun descends, White Beach transforms into a magical happening spot, perfected by chill-out beats, refreshing cocktails and gourmet bites.





SOMABAY

16390

somabay.com

info@somabayrealestate.com