


BLANCA

E-BROCHURE
APRIL 2021



A vertical photograph of a beach scene. The foreground is a wide, sandy beach with a light tan color. The middle ground shows a calm body of water with a vibrant turquoise hue. In the background, a range of brown, rocky mountains stretches across the horizon under a clear, deep blue sky with a few wispy white clouds. The overall atmosphere is serene and natural.

Mother nature
was unbelievably
generous with a sun-
kissed peninsula
floating on the Red
Sea's gleaming
coastline.

Here is where exquisite ribbons of sand are backed by lush green golf views and lapped by turquoise waters sleeping at the foot of red mountain peaks. Captivating beneath the water as above, Somabay is one of the few places on earth that does beach-front luxury so effortlessly.

SOMABAY



Nestled on 10 million square meters of lush land, life at Somabay is where fantasy-scapes follow you wherever you go and sundrenched activities take infinite elevating forms. Expertly conceived to evoke a laid-back European feel, every aspect of the heavenly development is sympathetic to nature, painting colorful experiences around its lively marina and soul-soothing jetty, so you can take recharge or decelerate. Home to 5 luxury resort hotels and a signature portfolio of residential properties, Somabay's one-of-a-kind settings with its full complement of premium amenities are the stage for incomparable experiences alongside friends and family.

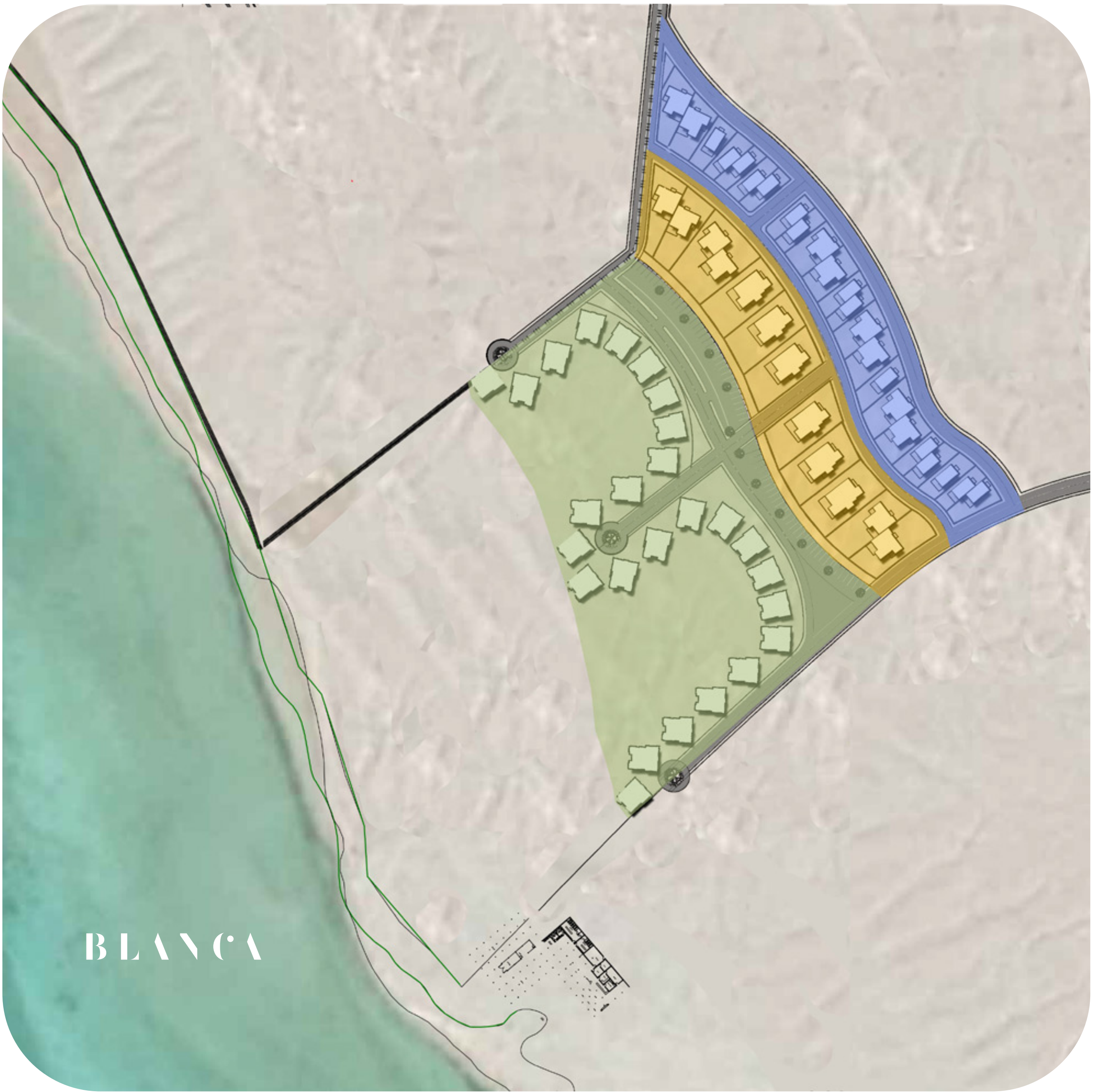





The Heart of The Bay Exclusively YOURS

Blanca's exclusive location grants its community an ideal mix of uninterrupted relaxation, powered by the lively happenings of Somabay's White Beach next door. The development distinctly lies in a quiet spot straight in the heart of the bay to invite nature and heavenly views into every corner of your home.

Just a few steps away, White Beach is a permanent backstage pass to experience a magnetic beachfront lifestyle, lined with elegant sun-beds embracing the sea from every angle and perfected by relaxing music tunes, impeccable service and a scrumptious variety of dishes and colorful cocktails to delight.

MASTERPLAN



-  GRAND CABANAS
-  STAND ALONES & TWIN UNITS
-  LOFTS & TWIN UNITS

A vertical photograph of a person's leg and foot in the ocean. The leg is the central focus, extending from the top of the frame down to the water. The person is wearing a colorful beaded bracelet on their ankle. The water is clear and blue, with gentle waves lapping at the person's foot. The background shows a bright sky with some clouds and a distant horizon line. The overall mood is serene and tropical.

embraced by picturesque bay views, it's easy to see why Blanca is the enchanting heart of Somabay.



GRAND
CABANA

BLANCA

GRAND CABANA

EXTERIOR



RECEPTION



GRAND CABANA

EXTERIOR



RECEPTION



GRAND CABANA

EXTERIOR



RECEPTION



GRAND CABANA

RECEPTION



GRAND CABANA

BEDROOM



GRAND CABANA

BEDROOM



GRAND CABANA

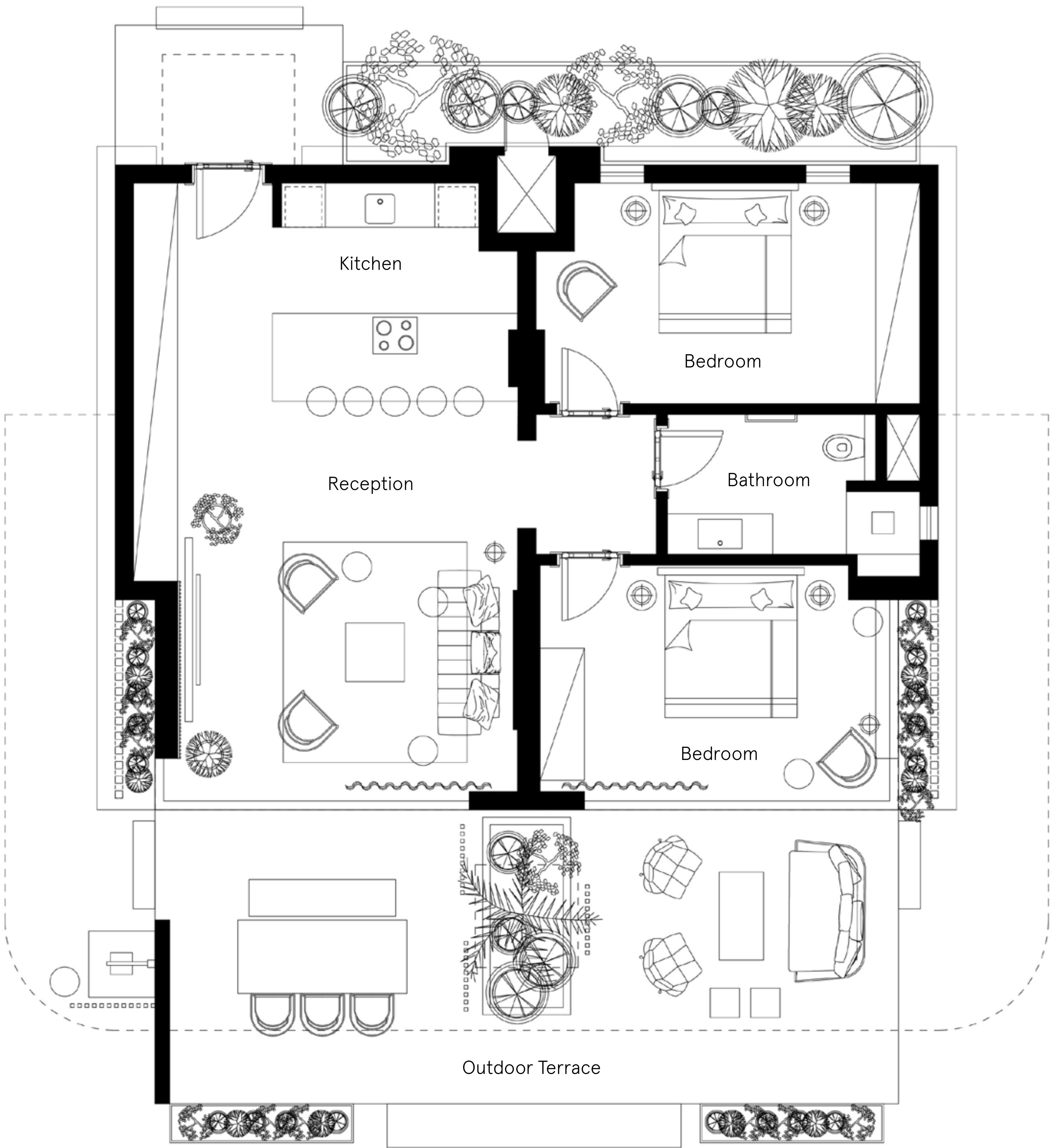
KITCHEN



BATHROOM



Grand Cabana — Floor Plan



Indoor Area
93 m²

Outdoor Area
45 m²

Total Gross
138 m²

Outdoor Terrace
9.85 × 3.80 m²

Bedroom
4.60 × 3.10

Bedroom
5.20 × 3.80

Reception
5.20 × 4.90

Kitchen
5.20 × 3.40

Bathroom
3.40 × 2.30

Lobby
1.65 × 1.9

DISCLAIMER 1. Drawings are not to scale. 2. The architectural details, dimensions and area in this plan are based on Schematic Design information only, and final As-Built conditions may vary. 3. All units are sold as unfurnished apartments, without furniture and furnishings, without white goods provisions, etc. 4. All images used are for illustrative purposes only and do not represent the actual size, features, specifications, fittings, and furnishings. 5. Somabay reserves the right to make revisions/alterations, at its absolute discretion, and without liability.



STAND ALONE
VILLA

BLANCA

STAND ALONE VILLA

EXTERIOR



RECEPTION



STAND ALONE VILLA

EXTERIOR



RECEPTION



STAND ALONE VILLA

RECEPTION



STAND ALONE VILLA

MASTER BEDROOM



STAND ALONE VILLA

DINING AREA



KITCHEN

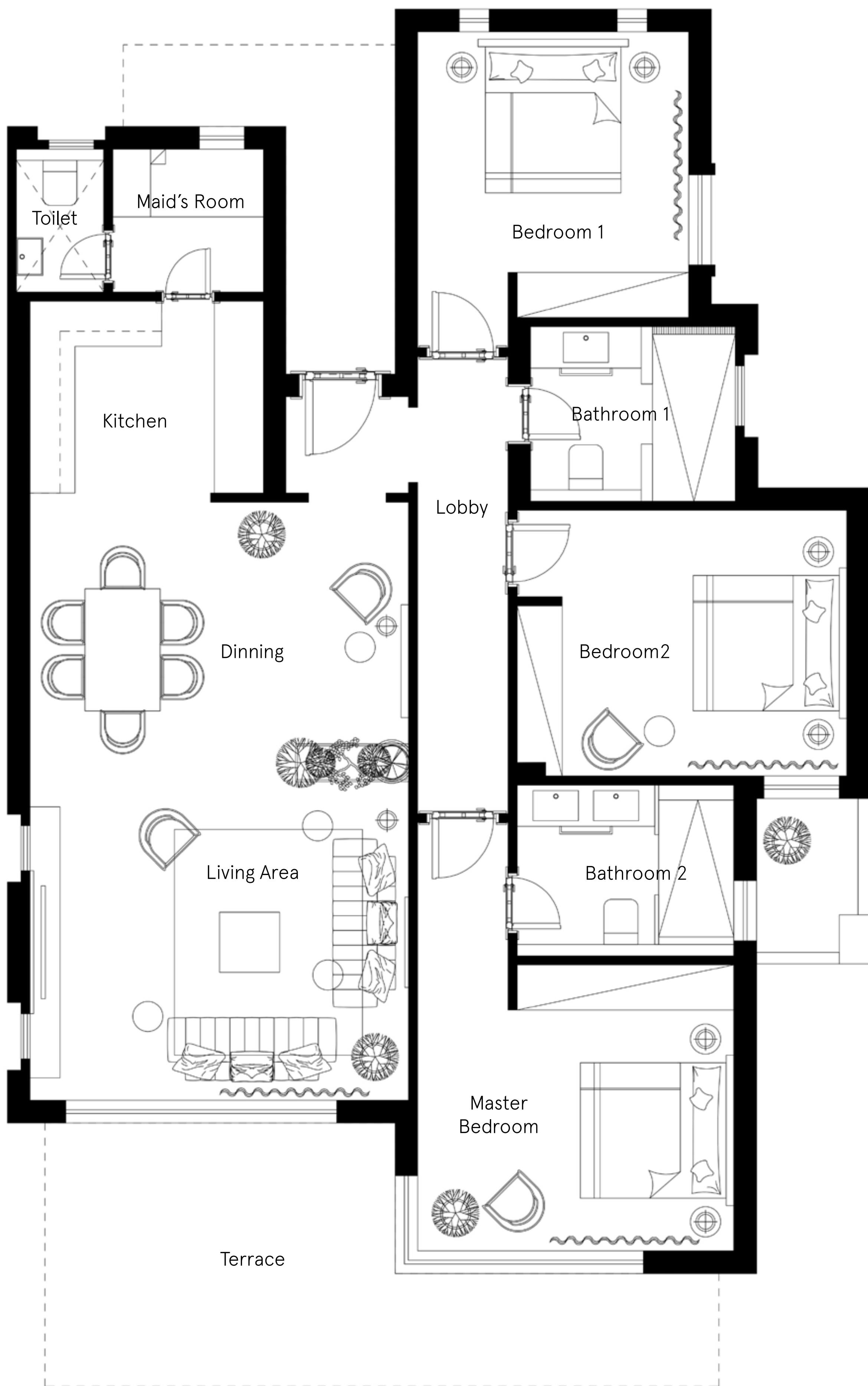


STAND ALONE VILLA

BATHROOM



Stand Alone Villa — Floor Plan



| | | |
|--|--------------------------------------|-----------------------------------|
| Unit Area 165.00 m ² | Bedroom 2 4.90 × 3.60 | Living Area 5.00 × 3.90 |
| Terrace 16.50 m ² | Bathroom 2 3.35 × 2.20 | Kitchen 3.62 × 2.80 |
| Gross Area 181.60 m ² | Master Bedroom 4.70 × 3.80 | Dinning 5.50 × 3.70 |
| | Maid's room 2.25 × 1.85 | Bedroom 1 4.10 × 3.80 |
| | Toilet 1.85 × 1.45 | Bathroom 1 3.35 × 2.20 |

DISCLAIMER 1. Drawings are not to scale. 2. The architectural details, dimensions and area in this plan are based on Schematic Design information only, and final As-Built conditions may vary. 3. All units are sold as unfurnished apartments, without furniture and furnishings, without white goods provisions, etc. 4. All images used are for illustrative purposes only and do not represent the actual size, features, specifications, fittings, and furnishings. 5. Somabay reserves the right to make revisions/alterations, at its absolute discretion, and without liability.



TWIN VILLA

BLANCA

TWIN VILLA

EXTERIOR



RECEPTION



TWIN VILLA

EXTERIOR



RECEPTION



TWIN VILLA

RECEPTION



TWIN VILLA

DINING AREA



KITCHEN



TWIN VILLA

MASTER BEDROOM

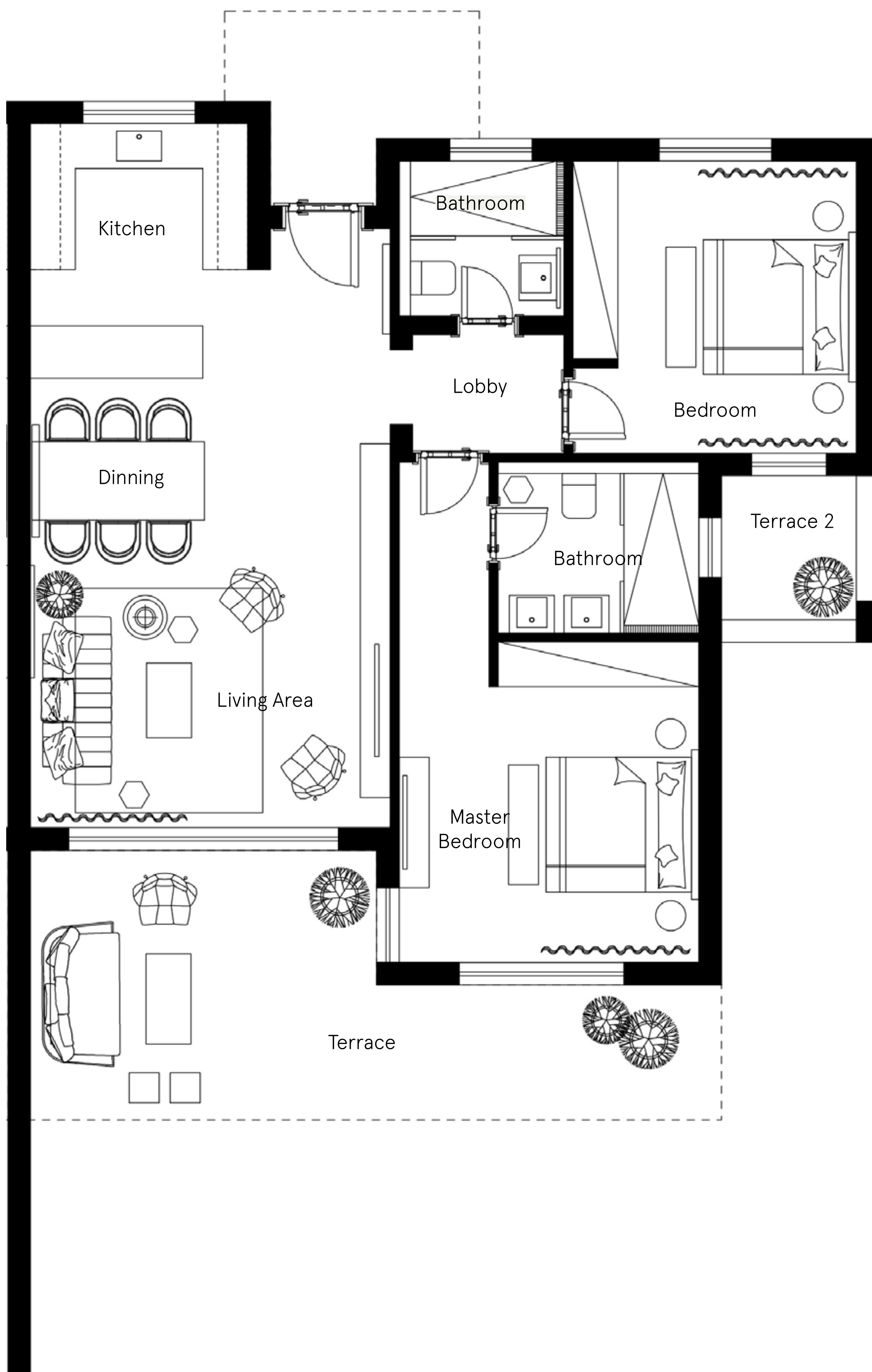


TWIN VILLA

BATHROOMN



Twin Villa — Floor Plan



Unit Area
112.80 m²

Terrace
18.74 m²

Gross Area
133.24m²

Bathroom
2.20 × 2.00

Master Bedroom
4.00 × 4.20

Bathroom
2.20 × 2.50

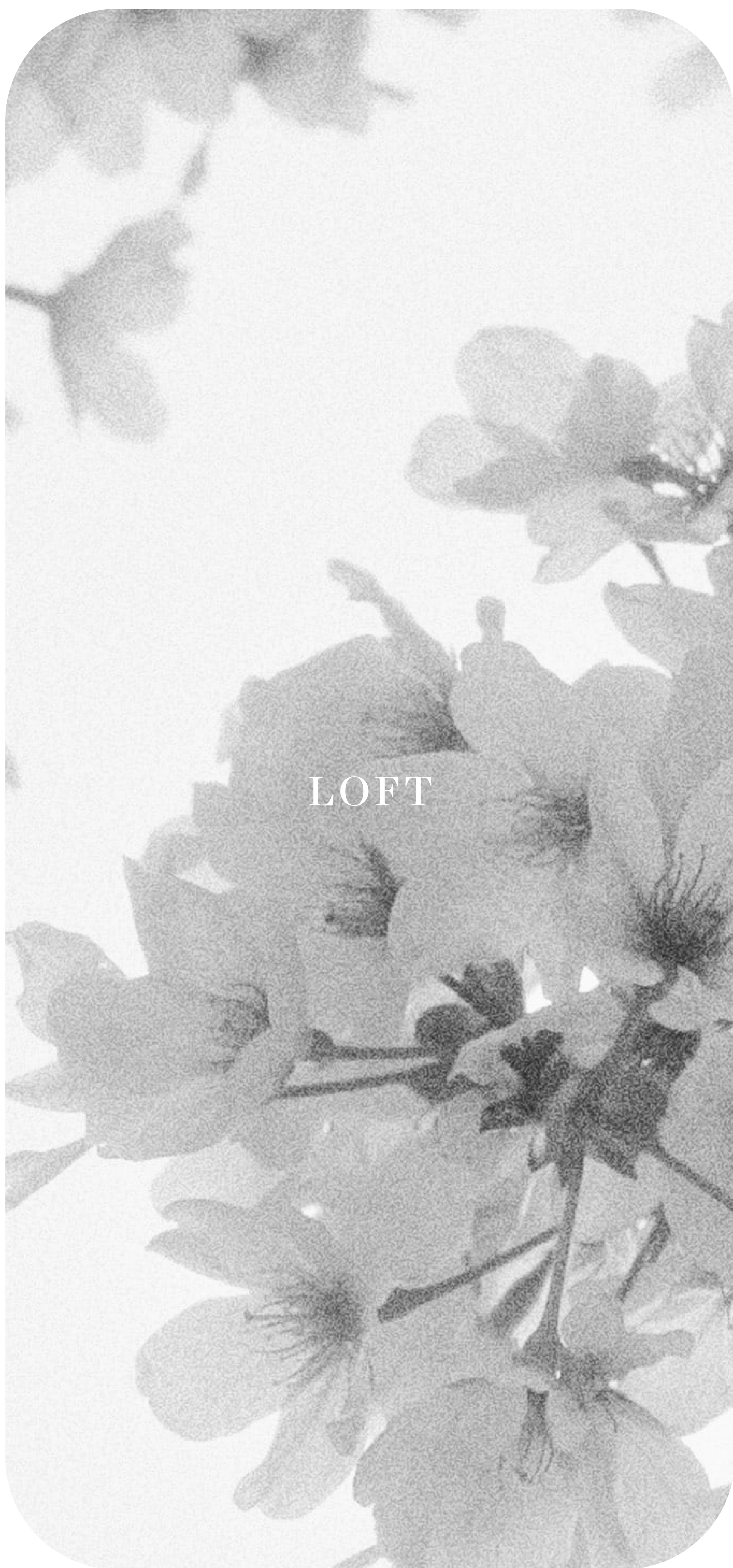
Living Area
4.60 × 3.90

Kitchen
1.80 × 2.80

Dinning
4.60 × 3.60

Bedroom
3.90 × 3.70

DISCLAIMER 1. Drawings are not to scale. 2. The architectural details, dimensions and area in this plan are based on Schematic Design information only, and final As-Built conditions may vary. 3. All units are sold as unfurnished apartments, without furniture and furnishings, without white goods provisions, etc. 4. All images used are for illustrative purposes only and do not represent the actual size, features, specifications, fittings, and furnishings. 5. Somabay reserves the right to make revisions/alterations, at its absolute discretion, and without liability.



LOFT

BLANCA

LOFT

EXTERIOR



RECEPTION



LOFT

EXTERIOR



RECEPTION



LOFT

DINING AREA



KITCHEN



LOFT

MASTER BEDROOM



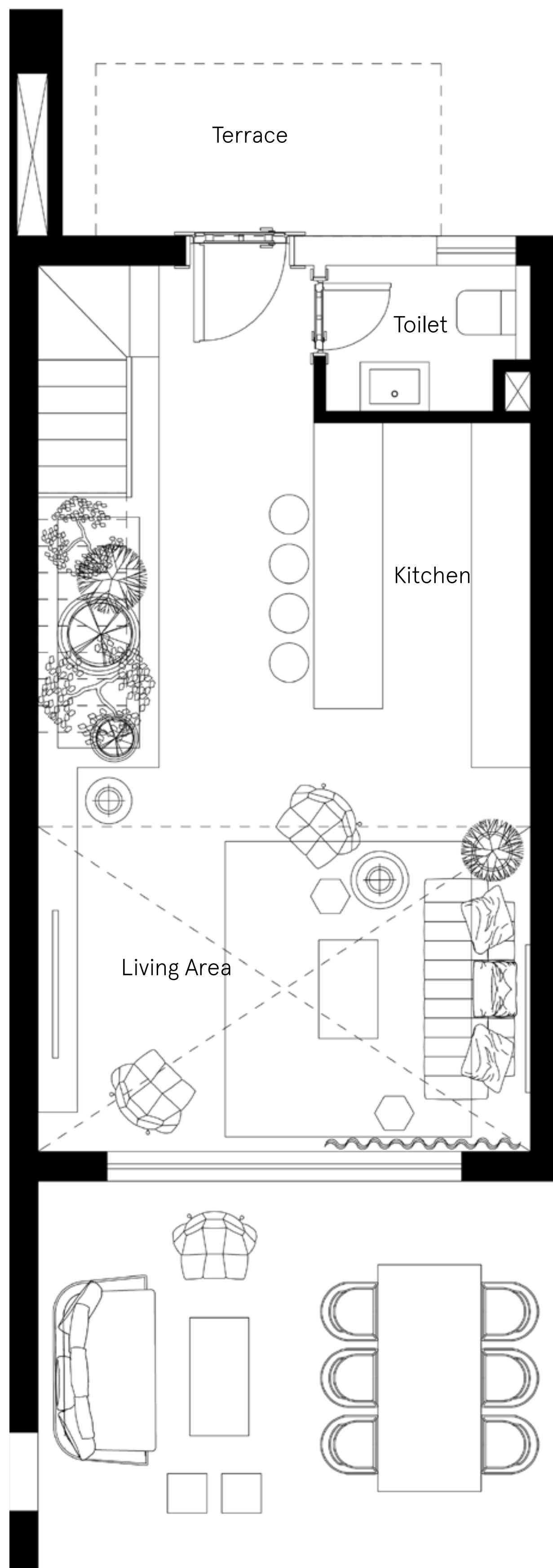
LOFT

BATHROOM



Lofts — Floor Plan

GROUND FLOOR ONE BEDROOM



Unit Area
86.44 m²

Terrace
15.67 m²

Gross Area
102.10 m²

Living Area
3.80 × 5.00

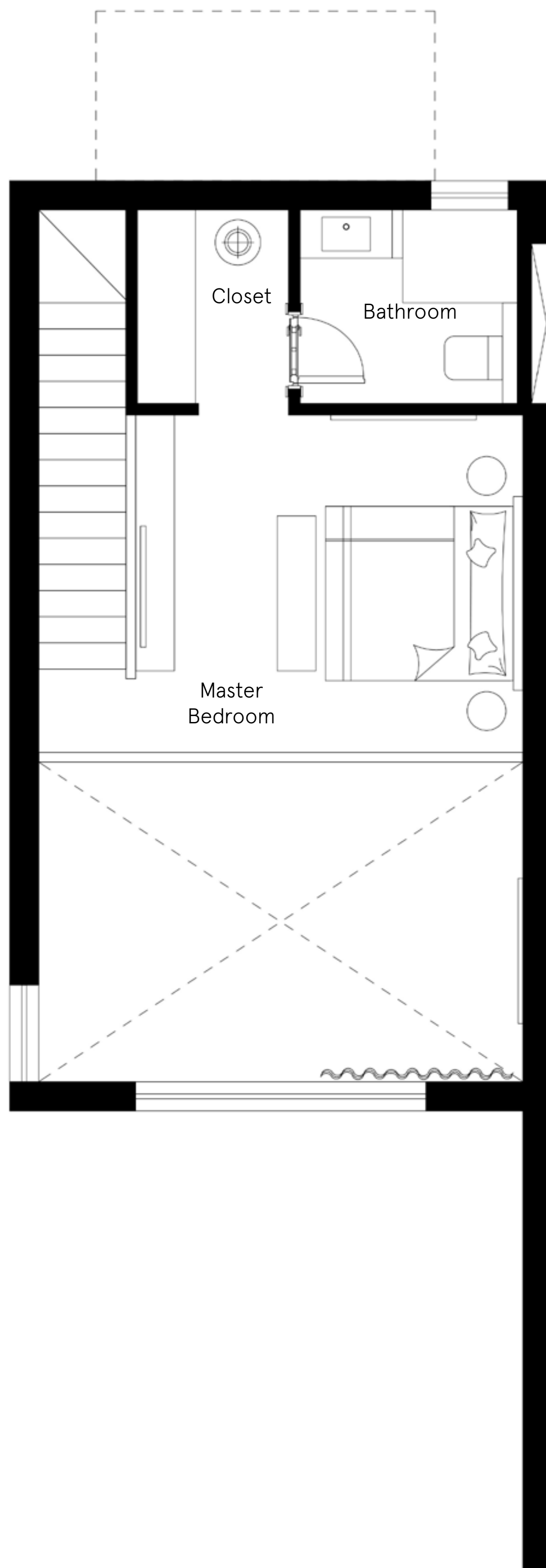
Kitchen
2.15 × 3.80

Toilet
2.00 × 1.40

DISCLAIMER 1. Drawings are not to scale. 2. The architectural details, dimensions and area in this plan are based on Schematic Design information only, and final As-Built conditions may vary. 3. All units are sold as unfurnished apartments, without furniture and furnishings, without white goods provisions, etc. 4. All images used are for illustrative purposes only and do not represent the actual size, features, specifications, fittings, and furnishings. 5. Somabay reserves the right to make revisions/alterations, at its absolute discretion, and without liability.

Lofts — Floor Plan

FIRST FLOOR ONE BEDROOM



Unit Area
86.44 m²

Terrace
15.67 m²

Gross Area
102.10 m²

Master Bedroom
3.60 × 4.00

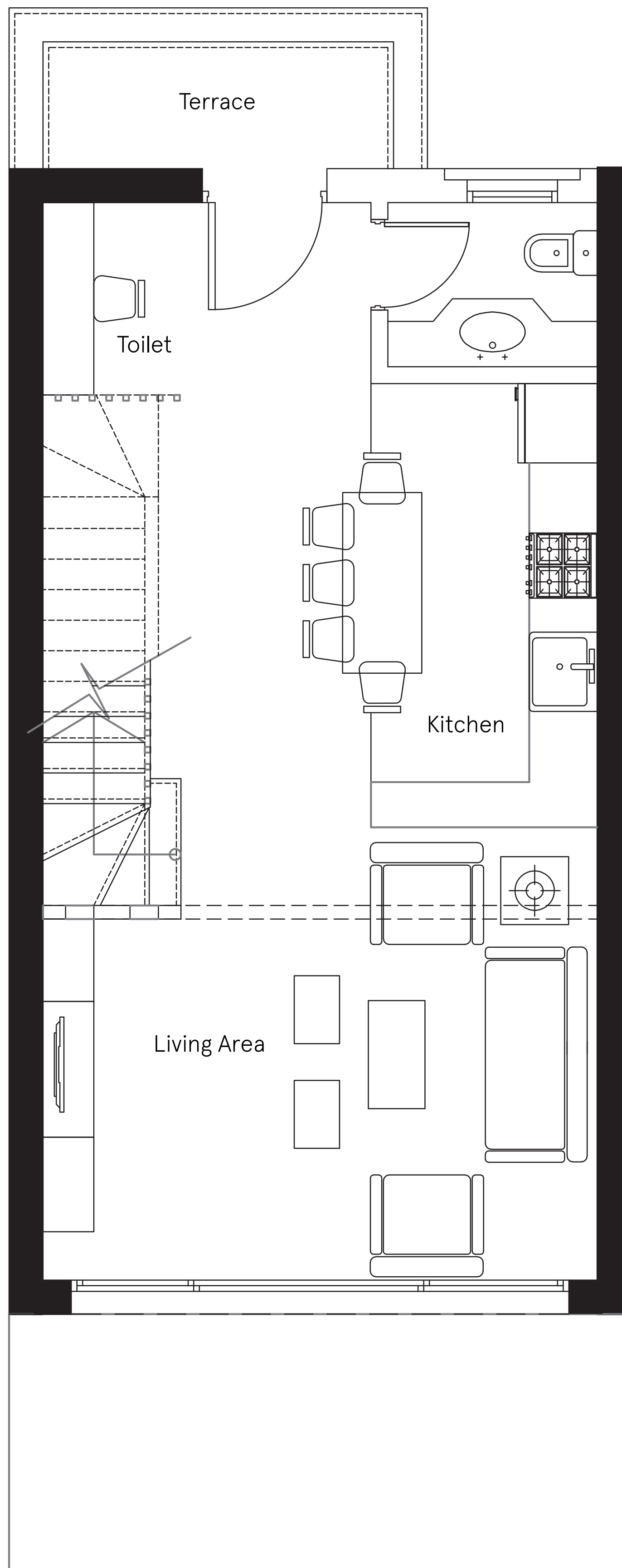
Bathroom
1.60 × 2.40

Closet
1.40 × 1.90

DISCLAIMER 1. Drawings are not to scale. 2. The architectural details, dimensions and area in this plan are based on Schematic Design information only, and final As-Built conditions may vary. 3. All units are sold as unfurnished apartments, without furniture and furnishings, without white goods provisions, etc. 4. All images used are for illustrative purposes only and do not represent the actual size, features, specifications, fittings, and furnishings. 5. Somabay reserves the right to make revisions/alterations, at its absolute discretion, and without liability.

Lofts — Floor Plan

GROUND FLOOR TWO BEDROOM



Unit Area
97.50 m²

Terrace
13.00 m²

Gross Area
110.50 m²

Living Area
4.90 × 4.00

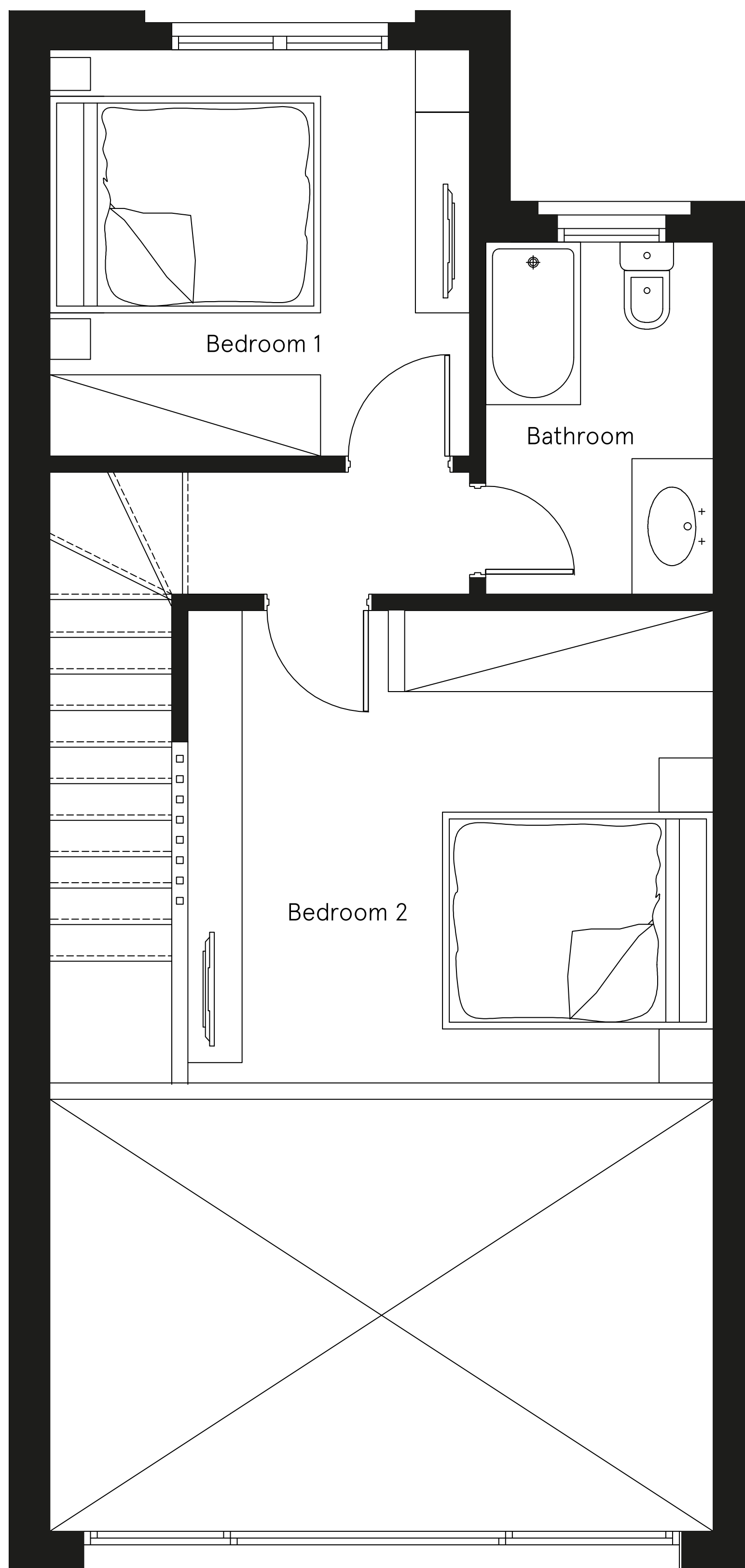
Kitchen
2.00 × 3.90

Toilet
1.45 × 1.85

DISCLAIMER 1. Drawings are not to scale. 2. The architectural details, dimensions and area in this plan are based on Schematic Design information only, and final As-Built conditions may vary. 3. All units are sold as unfurnished apartments, without furniture and furnishings, without white goods provisions, etc. 4. All images used are for illustrative purposes only and do not represent the actual size, features, specifications, fittings, and furnishings. 5. Somabay reserves the right to make revisions/alterations, at its absolute discretion, and without liability.

Lofts — Floor Plan

FIRST FLOOR TWO BEDROOM



Unit Area
97.50 m²

Terrace
13.00 m²

Gross Area
110.50 m²

Bedroom1
3.10 × 3.00

Bathroom
1.70 × 2.60

Bedroom 2
3.50 × 3.90

DISCLAIMER 1. Drawings are not to scale. 2. The architectural details, dimensions and area in this plan are based on Schematic Design information only, and final As-Built conditions may vary. 3. All units are sold as unfurnished apartments, without furniture and furnishings, without white goods provisions, etc. 4. All images used are for illustrative purposes only and do not represent the actual size, features, specifications, fittings, and furnishings. 5. Somabay reserves the right to make revisions/alterations, at its absolute discretion, and without liability.



Uncover the perfect
blend of spacious-
ness, comfort and
authenticity,
exclusively de-
signed around your
every need.



Somabay
Experience



Marina.



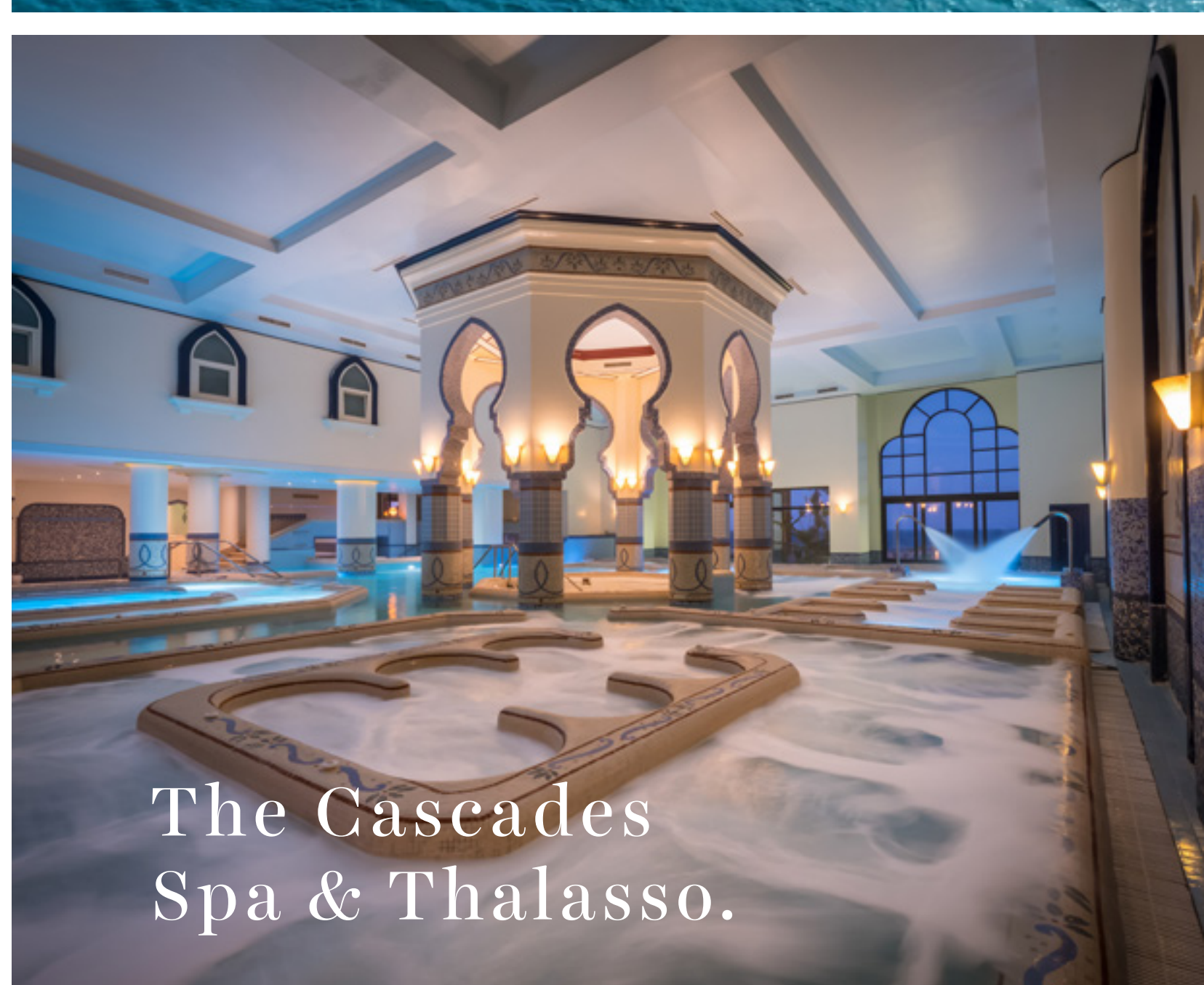
The Cascades
championship
golf course.



7 Bft
The Kite
House.



Orca
dive center.



The Cascades
Spa & Thalasso.

Start your day by teeing off at The Cascades Championship Golf Course then unwind at the award winning Cascades Spa and Thalasso and allow the healing powers of the Red Sea to restore balance to your body and soul. For the more adventurous, ORCA Dive Centre invites you to uncover the untapped wonders of Egypt's marine life at the site's colorful House Reef. Kitesurfing lovers can spend a serene afternoon gliding across flat waters at 7Bft —one of the top 3 kitesurfing spots in the world- followed by a world-class dining experience at any of the destination's signature restaurants. Blessed with dry desert winds, low humidity and a front-row seat on immaculate sea views, Somabay dictates an exciting itinerary for the whole family, transforming your everyday reality into a waking dream.



SOMABAY

16390

Somabay.com